

UT HSC HEALTH SCIENCES LIBRARY ANNUAL REPORT

2023-2024



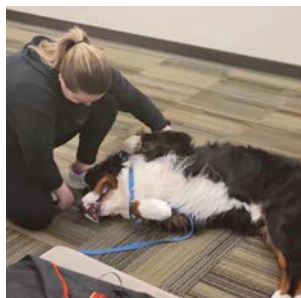
YEAR IN REVIEW

It was a busy year at the Health Sciences Library. View just a fraction of the highlights below!



SEPTEMBER - WELCOME BACK!

Once everyone was back on campus, we welcomed them with cheesy goodness! **Learn more about our annual welcome back celebrations on page 3.**



OCTOBER - MAGICAL CREATURES

We had two magical creatures (dogs) come visit the library during the duration of the Harry Potter exhibit. **Learn more on page 15.**



MARCH - PLANTING SEEDS OF COMMUNITY

The Library held not one, but two plant swaps that built community among faculty, staff, and students. **Learn more on page 6.**



JUNE - LESSS is More!

Jenessa McElfresh brought together librarians from around the globe in the name of evidence synthesis. **Learn how she did it and how it went on page 7.**



SEPTEMBER - RESEARCH RULES

Research and the library go together like peanut butter and jelly. We showcased just how true that comparison is at the Research Resource Fair! **Learn more on page 3.**



FEBRUARY - WINTER WARM UP

The Library is a cozy place year-round, but when you add a warm cup of coffee and a sweet treat, the coziness increases tenfold! **Learn more about how we keep it comfortable for our patrons on page 5.**



MAY - May is for MLA!

If it's May, you can be sure the Health Sciences Library Librarians are at the Medical Library Association conference. **Learn more about what they presented and accomplished on page 7.**

4,180

PATRONS ASSISTED

296

REFERENCE QUESTIONS
ANSWERED BY SKILLED
LIBRARIANS

13

SYSTEMATIC REVIEWS

4,000

INTERLIBRARY LOAN
REQUESTS MADE TO CAMPUS

611

LITERATURE SEARCHES
COMPLETED

74,948

UTHSC RESEARCH WORKS
DOWNLOADED

84

WORKSHOP ATTENDEES

165,357

WEBSITE VIEWS

2023-2024

YEAR IN REVIEW





**SC/SCMLA BY THE
#S
4
PRESENTATIONS
2
AWARDS**

Q1 STARTING OFF STRONG

The 2023/2024 fiscal year got off to a great start, with Library faculty and staff heading down to New Orleans for the 2023 joint South Central and Southern Chapters of the Medical Library Association, where they participated in five different presentations and brought home two awards! Hilary Jasmin and Sarah Newell (Top) placed second in the Research Awards for their amazing poster presentation on information literacy and AI, and Kaitlyn Ritacca received an NNLM Student Development Award.



SERVING STUDENTS With new students arriving on campus and returning students coming back, library liaisons and other faculty and staff began showing students that they're here to help by serving them pizza at our Back to School Bash. We served over 20 pizzas to welcome them to campus!



FALL STUDENT EVENTS BY THE #'S 7 STUDENT EVENTS

Q2 THE MAGIC OF STUDENT EVENTS



WINTER WARM-UP Nothing soothes the stress of finals season like a warm cup of coffee and a sweet treat. During the Winter Warm-Up, the Library treated our patrons to this winning combination. This event was also hosted in collaboration with Student Success, allowing us to be stronger together and provide more food-based support to more students.

The second quarter was filled with student events—seven of them, to be exact! We had several events centered around the traveling NNLM exhibit, *“Renaissance Science, Magic, and Medicine in Harry Potter’s World.”* You can learn more about everything related to the exhibit on pages 14 and 15.

Not everything this quarter revolved around Harry Potter, though! The fourth floor of the Library got new carpet and re-opened for student use. Library faculty and staff participated in the Department of Academic, Faculty, and Student Affairs retreat. Lastly, one of our own, Sarah Thompson, graduated with her MSIS in December!





PROP SWAP BY THE #'S



The most popular event of the third quarter was the Prop Swap. For this event, we invited patrons from around campus to bring a plant propagation to swap with fellow plant lovers. It was a fantastic opportunity to get to know people outside your department on a more personal level! It also helped participants continue the mental wellness-improving practice of caring for plants!

71
CUTTINGS FOUND
HOMES
45
ATTENDEES

Q3 COMING TOGETHER

The third quarter was all about coming together, whether through several student events or the results of interdepartmental collaboration. Research and Learning Services Librarian Hilary Jasmin joined UTHSC's Center for Healthcare Improvement and Patient Simulation (CHIPS) at the International Meeting for Simulation in Healthcare (IMSH) in San Diego to discuss the use of AI in healthcare simulation case development (Bottom Left). Hilary Jasmin and Sarah Newell partnered with CHIPS on a 60-minute session to help simulationists use ChatGPT and Bard AI to develop simulation scenarios.





MLA CONFERENCE BY THE #'S

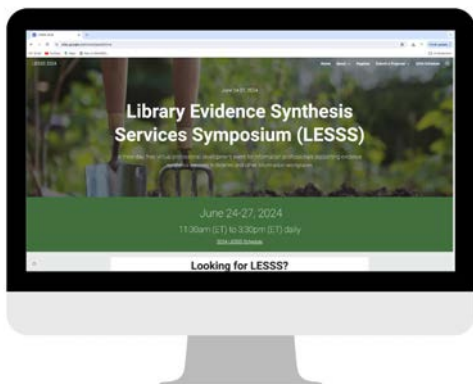
3

LIBRARIANS

5

PRESENTATIONS

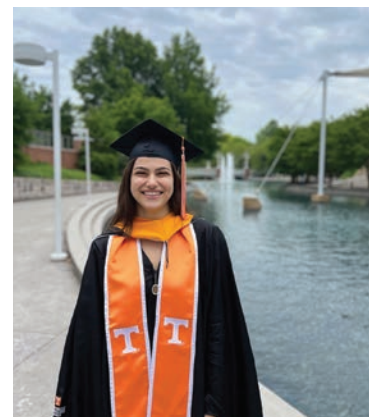
Q4 A QUARTER FULL OF CONFERENCES



When it gets warmer, it's conference season. Librarians and staff attended the Tennessee Health Sciences Library Association's meeting, the West Tennessee Academic Library Conference, and the Medical Library Association's national conference. One of our own librarians even hosted their own conference this quarter! We also treated students to a special treat from Crumbl Cookies to sweeten finals season (bottom left). The Library celebrated another MSIS with the graduation of Kaitlyn Ritacca (bottom right).

A GLOBAL SYNTHESIS COMMUNITY

Jenessa McElfresh, Systematic Review Services Coordinator, brought together librarians from around the globe in the name of evidence synthesis. Jenessa McElfresh and Cozette Comer from Virginia Tech created the Library Evidence Synthesis Services Symposium (LESSS) to connect all evidence synthesis service providers. The online conference attracted 1,057 registrants from 33 different countries!





HSHC BY THE #'S

100

**HISTORICAL
RESEARCH
REQUESTS**

HEALTH SCIENCE HISTORICAL COLLECTIONS

The Health Science Historical Collections had a busy year of programming. HSHC hosted two traveling exhibits from the Network of the National Library of Medicine (NNLM): *Renaissance Science, Magic, and Medicine in Harry Potter's World* and *The Literature of Prescription: Charlotte Perkins Gilman and "The Yellow Wallpaper"*. The HSHC sponsored a number of events to accompany the exhibits, including a lecture and panel discussion entitled *Women as Patients and Providers* featuring Dr. Tara Jackson Lemoine, Executive Director of CHIPS and Dr. Kate Fouquier, Professor and Coordinator of the DNP-NMW Concentration in the College of Nursing. (Harry Potter-related events are detailed on pages 14-15).

HSHC also partnered with the Office of Alumni & Constituent Engagement to celebrate the publication of Dr. Alvin Crawford's memoir, *The Bone Doctor's Concerto*, with two book signing events. Dr. Crawford (COM, '64) was UTHSC's first African American graduate.

New acquisitions to the HSHC include a first edition of *Tabulae Anatomicae a Celeberrimo Pictore Petro Berrettino Cortonesi*, a 1741 anatomical atlas featuring drawings by influential Italian Baroque painter Pietro da Cortona and several early 20th century anatomical models.



LEFT Dr. Alvin Crawford signs copies of his memoir during the on-campus book signing event, which was sponsored in part by the Health Science Historical Collection.



NEW ACQUISITIONS The HSHC added ten early and mid-20th century anatomical models to its artifact collection.



SUPPORTING HISTORY Jennifer Langford, archivist, poses in front of a stack of Dr. Crawford's new book at an event for the Bluff City Medical Society held at the Peabody Hotel on February 25.

DC BY THE #'S

74,948
DOWNLOADS DURING
THE 2023-2024 YEAR

183
COUNTRIES ACCESSED
UTHSC RESEARCH

1,088
WORKS COLLECTED

3,031
INSTITUTIONS

CHECK IT OUT AT
DC.UTHSC.EDU!

DIGITAL COMMONS

The UT Health Science Center Digital Commons, the campus Open Access Institutional Repository, preserves and showcases the research and scholarship of the UT Health Science Center community to a global audience.

Managed by the UT Health Science Center Health Sciences Library, the repository hosts a broad range of scholarship types and formats, including theses and dissertations, student projects, posters and presentations, conference proceedings, white papers, journal articles, campus publications, audio and video, symposia, and more. The repository also has the capability to host peer-reviewed journals.

If you would like to learn more about adding your scholarship or events to Digital Commons, or are interested in starting a journal, please contact the repository manager at dclib@uthsc.edu for a consultation.



Presentations

- Esmail, J., Naseer, L., Segura, K., Khanna, P., & **McElfresh, J.** Multimodal pain management for outpatient gynecology procedures. Poster, ACOG 2023 District VII Annual District Meeting, Tulsa, OK, September 29-October 1, 2023.
- Franklin, A. S., Gillespie, M. B., Nieri, C., & **McElfresh, J. M.** Gabapentinoids for UAS pain management: Systematic Review and meta-analysis. Presentation, AAO-HNSF 2023 Annual Meeting and Oto Experience, Nashville, TN, September 30-October 4, 2023.
- Gill, M., & **Langford, J.** (2024, March, 25). Evoking dialogue using a curated selection from Dr. Margaret Newman's Archive [Podium session]. 2024 Virtual Nursing Theory Week Nursology Theory Think Tanks for the Future <https://nursingtheoryconference.com/program-2024-march-21-25/>
- **Holt, A., Newman McDonald, J., McElfresh, J., Doolin, M., & Newell, S.** Going further together: Collaboratively building a brand new research impact challenge. Presentation, Medical Library Association Annual Conference, Portland, OR, May 18-21, 2024.
- **Jasmin H. M., Newell S. E.,** Jackson Lemoine T., Agee X., Kelley C., Poster, Southern Chapter/Medical Library Association, Information Literacy as an Avenue for AI-Generated Healthcare Simulation Case Appraisal, September 24, 2023
- **Langford, J.** (2024, May 9). Finding Meaning and Engagement Through Collaboration with Nursing Faculty [Presentation]. 2024 Librarians, Archivists, and Museum Professionals in the History of the Health Sciences Annual Meeting.
- **McElfresh, J.** Defining our scope: Eliminating "service creep" in library systematic review support services. Presentation, Medical Library Association Annual Conference, Portland, OR, May 18-21, 2024.
- **McElfresh, J. & Jasmin, H.** Conceptualizing and operationalizing empathy as a cornerstone of systematic review services. Presentation, Southern and South Central Joint MLA Chapter Meeting, New Orleans, LA, September, 21-26, 2023.
- **McElfresh, J. & Ritacca, K.** Assessing and enhancing library workshops: Results of a multi-institution environmental scan. Presentation, Southern and South Central Joint MLA Chapter Meeting, New Orleans, LA, September, 21-26, 2023.
- Mi, M., Zhang, Y., **Wu L.,** & Wu, W. (2024, May 18-21). How do journals and publishers of highly selected journals react to submissions of artificial intelligence assisted manuscripts? [Conference presentation]. Medical Library Association Annual Meeting, Portland, OR, United States.
- **Newell, S., Newman McDonald, J., McElfresh, J., Ritacca, K., & Holt, A.** Reduce, reuse, recycle: Assessing existing practices and developing a sustainable, efficient model for library services assessment. Presentation, West Tennessee Academic Library Consortium, Memphis, TN, April 19, 2024.
- **Newell S. E., Holt A. L., McElfresh J. M., Newman J. N., Ritacca K. A.,** Oral Presentation, Presenter, Contributor, Contributor, Contributor, Contributor, West Tennessee Academic Library Consortium, Reduce, Reuse, Recycle: Accessing existing practices and developing a sustainable, efficient model for library services assessment, LeMoyne-Owen College, Memphis, TN, April 19, 2024
- **Newman, J. N.,** Panel Discussion. Be Well MLA, Therapy Dogs and Human Health. Medical Library Association. (March 20, 2024).
- **Newman, J. N., McElfresh, J. M., Newell, S. E., Holt, A. L., Thompson, S.,** Paper. MLA 2024, Going Further Together: Collaboratively Building a Brand New Research Impact Challenge. Medical Library Association, Portland, OR. (May 21, 2024).
- **Newell, S. E., Newman, J. N., McElfresh, J. M., Holt, A. L., Ritacca, K.,** Oral Presentation. WeTALC Annual Meeting, Reduce, Reuse, Recycle: Assessing Existing Practices and Developing a Sustainable, Efficient Model for Library Services Assessment. West Tennessee Academic Library Conference. (April 19, 2024).

- Smith, S., Whitney, R., **McElfresh, J.**, Ledbetter, L., Comer, C., Walden, R. L. Speed dating through evidence synthesis education: Finding your instructional match. Presentation, Medical Library Association Annual Conference, Portland, OR, May 18-21, 2024.
- Talbot, L. A., **Wu, L.**, Bradley, D. F., Jr, Ramirez, V. J., Scallan, R. M., Morrell, C. H., Zuber, P. D., Enochs, K., Hillner, J., Fagan, M., & Metter, E. J. (2023, November 8). Nonpharmacological therapies for musculoskeletal injury in military personnel: A systematic review meta-analysis with implications for military families. [Conference presentation], Care of the Military Family Symposium.

Publications

- Albro, M., & **McElfresh, J.** (2024). The academic library as workplace: Using the Knowledge Intensive Work Environment Survey Target (KIWEST) to explore challenges faced by knowledge workers. *Journal of New Librarianship*, 9(1), 85-98. <https://doi.org/10.33011/newlibs/15/8>
- Albro, M., Serrao, J.L., Vidas, C.D., **McElfresh, J.M.**, Sheffield, K.M., & Palmer, M. (2024). Applying librarian-created evaluation tools to determine quality and credibility of open access library science journals. *portal: Libraries and the Academy* 24(1), 59-81. <https://doi.org/10.1353/pla.2024.a916990>.
- Berry, J. M., Tansey, J. B., **Wu, L.**, Choudhri, A., Yawn, R. J., MacDonald, C. B., & Richard, C. (2024). A Systematic review of cochlear implant-related magnetic resonance imaging artifact: Implications for clinical imaging. *Otology & Neurotology*, 45(3), 204-214. <https://doi.org/10.1097/MAO.0000000000004095>
- Contaxis, N., Badger, K., Bohman, L., Gonzales, S., Kim, S., Koshoffer, A., Milliken, G., **Newman, J. N.**, Otsuji, R., Renirie, R., Smith, K., Urmi, U., Yarnell, A., Ye, H., Yee, M. (2024). Building on NIH's data sharing policy. *Science*, 384(6697), 747-748. <http://dx.doi.org/10.1126/science.adn5594>.
- Grande, P. K., Hill, D., **McElfresh, J.**, Velamuri, R., & Liu, X. (2024). Systematic review and meta-analysis of Biodegradable Temporizing Matrix application for complex wound reconstruction. *Journal of Burn Care & Research*, irae081. <https://doi.org/10.1093/jbcr/irae081>
- **McElfresh, J. M.** (2023, July 17). [Review of the book *Finding your seat at the table: Roles for librarians on institutional regulatory boards and committees*, by S. M. Harnett & L. P. Cantwell, eds.]. *Medical Reference Services Quarterly*, 42(3), 308-309. <https://doi.org/10.1080/02763869.2023.2209453>
- **McElfresh, J. M.** (2024, June). [Review of the book *Beyond the kitchen table: Black women and global food systems* by P. E. McCutcheon, L. E. Best, & T. Rajack-Talley, eds.]. *CHOICE Reviews*, 61(10).
- **Newman, J. N.** (2023). Using Data Interviews to Map Research Data Services (RDS) Needs at a Health Science Institution. *Journal of eScience Librarianship*. <https://doi.org/10.7191/jeslib.756>.
- Ogu, U. O., Mukhopadhyay, A., Patel, K., **Nelson, M. N.**, Strahan, K. S., **Wu, L.**, Smeltzer, M. P., & Ataga, K. I. (2024). Hydroxyurea at escalated dose versus fixed low-dose hydroxyurea in adults with sickle cell disease. *European Journal of Haematology*, 112(3), 466-474. <https://doi.org/10.1111/ejh.14138>
- Talbot, L. A., **Wu, L.**, Morrell, C. H., Bradley, D. F., Jr, Ramirez, V. J., Scallan, R. M., Zuber, P. D., Enochs, K., Hillner, J., Fagan, M., & Metter, E. J. (2024). Nonpharmacological therapies for musculoskeletal injury in military personnel: A systematic review/meta-analysis. *Military Medicine*, usae023. Advance online publication. <https://doi.org/10.1093/milmed/usae023>
- **Thompson, S. & Newman McDonald, J.** (2024). Promoting a Research Impact Challenge Through Content Marketing. *Marketing Libraries Journal*, 8(1), 153-175. https://journal.marketinglibraries.org/fall2024/06_MLJv8i1.pdf

LIBRARY FACULTY AND STAFF

The UT Health Science Center Health Sciences Library is a well-oiled machine that works across departmental lines to ensure that UTHSC faculty, staff, and students receive the best services and resources possible from their library. The Library's talented employees possess countless skill sets, which they apply to their work in innovative and creative ways every day!



Administration

Administration looks over the Library as a whole and makes sure all the parts are working together!



Rick Fought, EdD, MLIS
Assistant Vice
Chancellor
rfought1@uthsc.edu



Carriann Bingham, MBA
Business Manager
cbingha2
@uthsc.edu



Jennifer Langford, CA, MLIS
Archivist/Special
Collections
Librarian
jwelch30
@uthsc.edu



G. Randall Watts, MDIV, MS
Associate Director
gwatts3@uthsc.edu



Carolyn Polk
ECS/Technical
Services Assistant
cpolk@uthsc.edu



Sarah Thompson
Communications
Coordinator
sthomp97
@uthsc.edu

Research and Learning Services

Research and learning services provides a suite of reference services to the campus with librarians specializing in topical areas.



Lin Wu, MLIS

Assistant Director
for Research &
Learning Services
lwu5@uthsc.edu



Hilary Jasmin, MSIS

Research &
Learning Services
Librarian
hjasmin@uthsc.edu



Jenessa McElfresh, MLIS

Systematic Review
Service Coordinator
and Senior RLS
Librarian
jmcelfre@uthsc.edu



Tamara Nelson, MLIS, EdS

Senior Research &
Learning Services
Librarian
tnelso24@uthsc.edu



Annabelle Holt, MLIS

Research &
Learning Services
Librarian
annabelle
@uthsc.edu



Theresa Watson

Evenings &
Weekends Assistant
twatso41
@uthsc.edu



Delores Johnson

Evenings &
Weekends Assistant
dajohnson
@uthsc.edu



Jacqueline Smith

Sr. Reference
Associate
jsmit408
@uthsc.edu



Kaitlyn Ritacca

Sr. Reference
Services Specialist
kritacca@uthsc.edu

Electronic and Collection Services

If you can access it online, Electronic and Collection Services probably made it happen!



Paul Gahn, MLIS

Assistant Director
for Electronic &
Collection Services
pgahn@uthsc.edu



Jess Newman McDonald, MSIS

Research Data
& Scholarly
Communication
Lead
jnewman
@uthsc.edu



Sarah Newell, MLIS

Assessment & Data
Services Librarian
snewell@uthsc.edu



Wanda Booker-Wade

ECS/Computer
Information
Specialist
wbookerw
@uthsc.edu

THE WIZARDING WORLD OF MEDICINE

From October 23 to December 2, the Library was magically transformed from its normal role as a place of learning and support to a venue for rediscovering the magic of medicine. The Library's Health Science Historical Collections hosted the National Library of Medicine exhibit Renaissance Science, Magic, and Medicine in Harry Potter's World. This exhibit looks back at the older ideas of medicine that inspired some of the details of the hit Harry Potter series. The HSHC sponsored a number of Library events to accompany the exhibit.

In these six short weeks, we held six events showcasing the exhibit. The Library kicked things off with a Harry Potter trivia night on Thursday, October 26. Accio Answers featured prizes, butterbeer, and pizza.

Next, patrons were invited to explore "The Magical World of Medicinal Plants." Students were able to take home their own lithops, a type of plant that only needs to be watered once or twice a year! They were also treated to information about the medicinal uses of common plants over a cup of tea.

Next up were two visits from some of the most magical creatures—therapy dogs. Asa, a therapy dog owned by the Library's very own Jess Newman-McDonald, visited on November 16, and Otis visited on November 30.

On Wednesday, November 15, patrons were permitted into the "restricted section." In the Harry Potter books and movies the Restricted Section of the Hogwarts library contains rare and valuable books. On Wednesday, November 15, patrons were permitted into our own Restricted Section with an open house and tours of the Health Science Historical Collections rare and antiquarian books, artifacts, and historical photos and documents.

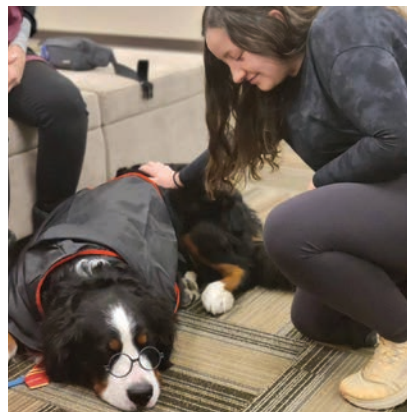
We wrapped up the events for this exhibit with a lunchtime lecture on the history of the relationships between humans and plants, focusing on how human health and plant health are related both historically and in the present day, presented by Dr. Sarah Boyle, Associate Professor of Biology and Chair of Environmental Studies and Sciences at Rhodes College.





LEFT Patrons gathered to view and select seeds and lithops to take home.

BOTTOM The lithops for students to take with them were decorated fittingly!



MAGICAL BEASTS During our celebration of all things at the intersection of magic and medicine, two therapy dogs came to visit. The pleasant puppy on the left is Asa!

LUNCHTIME LEARNING Students, faculty, and staff enjoyed sandwiches while learning more about the intersection of plants and health from a perspective they may not see often!



THE UNIVERSITY OF
TENNESSEE
HEALTH SCIENCE CENTER.

UTHSC HEALTH SCIENCES LIBRARY

Alexander Building (Floors 2-5) | 877 Madison Ave
Memphis, TN 38163 | 901.448.5634 | library@utshc.edu

uthsc.edu/library