

Medical Student Study & Storage Spaces

University of Tennessee Health Science Center
College of Medicine - Nashville Campus
Murfreesboro & Nashville Rotation Sites



Ascension

Listening to you, caring for you.®

4/26/2024

Murfreesboro

Emergency Medicine

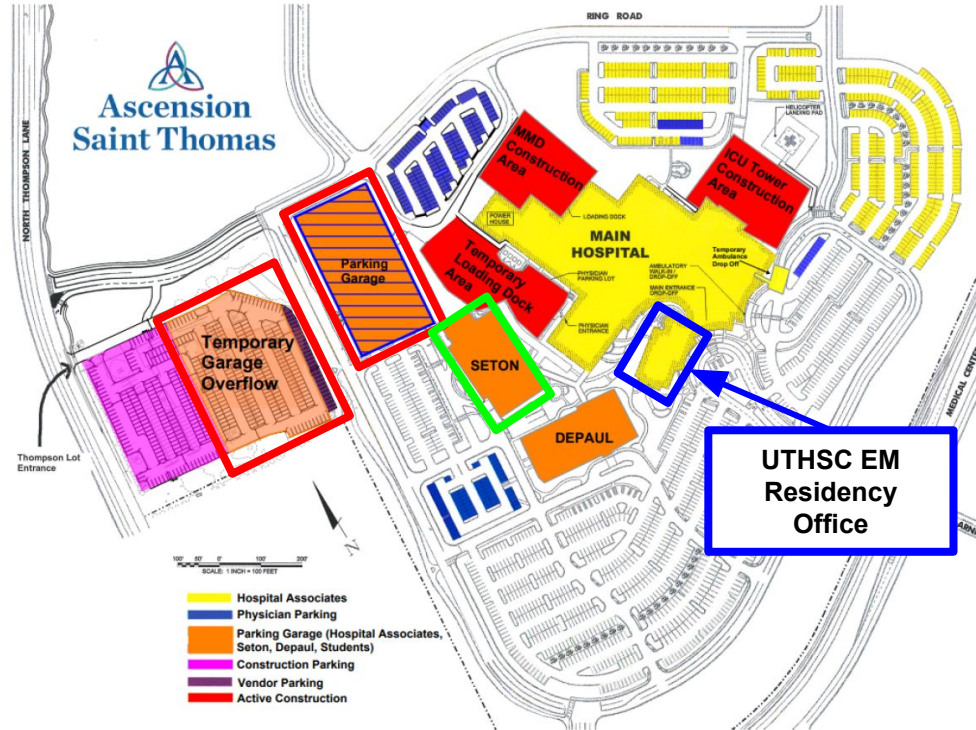
Emergency Medicine

Emergency Medicine Academic Office
Ascension Saint Thomas Rutherford Hospital
1700 Medical Center Parkway
Education Building, 2nd floor

- Park in parking garage (badge access) or temporary garage overflow parking across ring road at the crosswalk.
- Enter through Seton Building main entrance, located under the awning near Saint Thomas Heart Sign.
- Follow the hallway making a left where the two MOB's intersect with the main hospital.
- Continue toward the front of the hospital, take the hallway to the right of the gift shop to elevators
- Take elevator to second floor, left out of elevator, right at intersecting hallway
- UTHSC EM Residency Office second door on the left

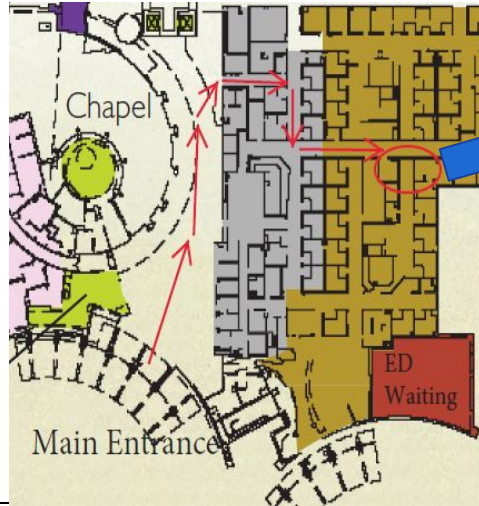
Resources for Students

- Computer Workstations
- Relaxation/Lounge
- Secure Storage
- Study Space



Emergency Medicine

ASTR Emergency Department Doctor's Work Area "Doc Box"

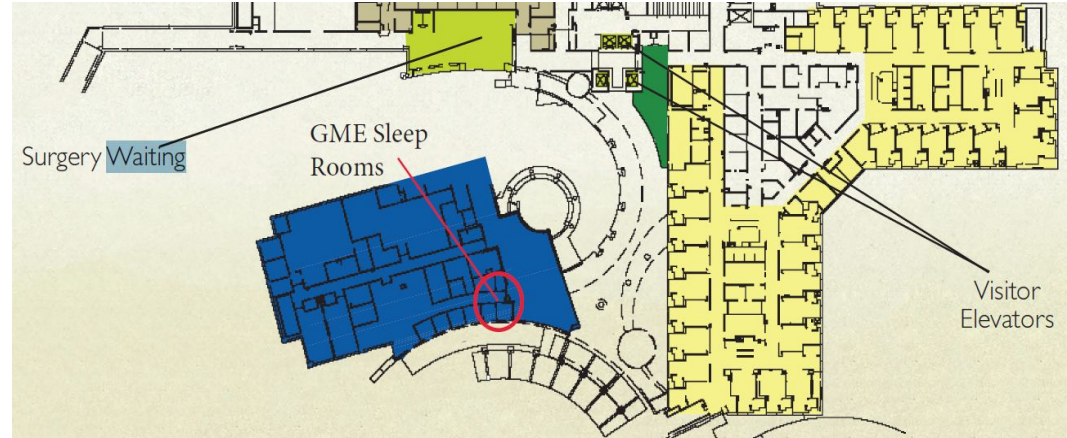


Resources for Students
• Clinical Workspace

Emergency Medicine

ASTR Resident/Student Sleep Rooms

Hospital - 2nd Floor of Education Bldg (hallway adjacent to gifts shop)



Resources for Students

- Sleep/Call Room

Murfreesboro



Family Medicine

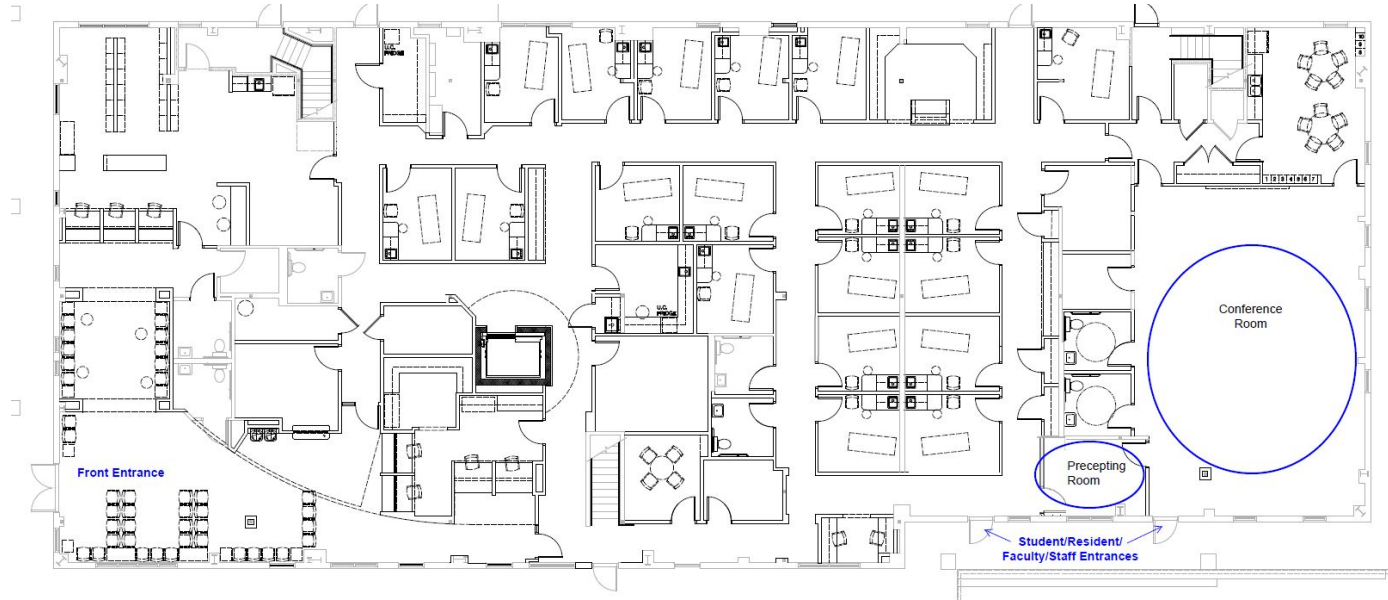
Family Medicine

Family Medicine Academic Offices - 1st Floor

Saint Louise Clinic (1020 N. Highland Ave.)

Resources for Students

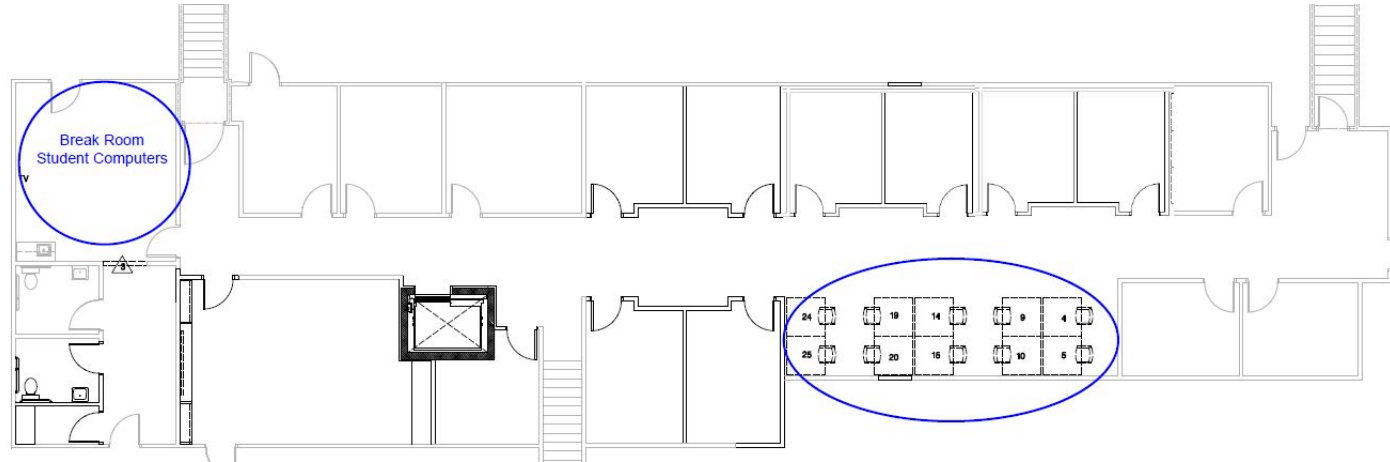
- Clinical Workspace
- Study Space



Family Medicine

Family Medicine Academic Offices - 2nd Floor

Saint Louise Clinic (1020 N. Highland Ave.)



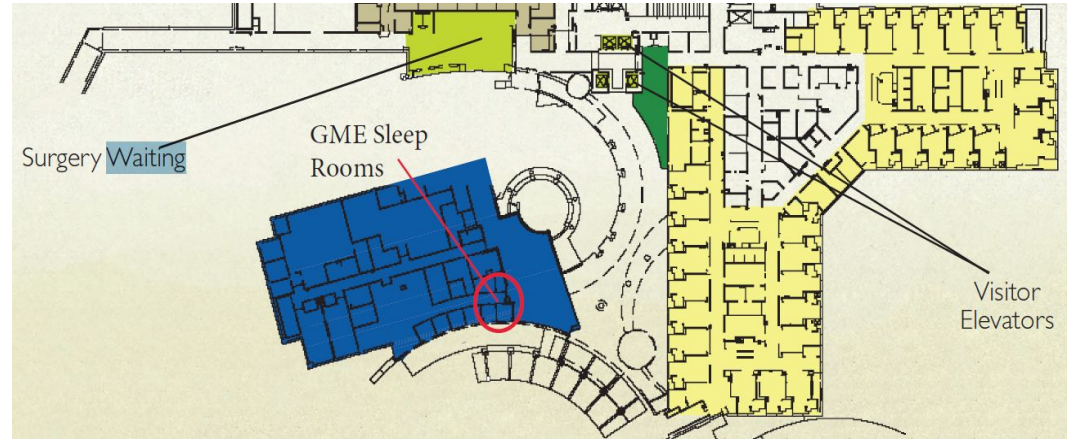
Resources for Students

- Computer Workstations
- Relaxation/Lounge
- Secure Storage
- Study Space

Family Medicine

ASTR Resident/Student Sleep Rooms

Hospital - 2nd Floor of Education Bldg (hallway adjacent to gifts shop)



Resources for Students

- Sleep/Call Room

Nashville

Internal Medicine

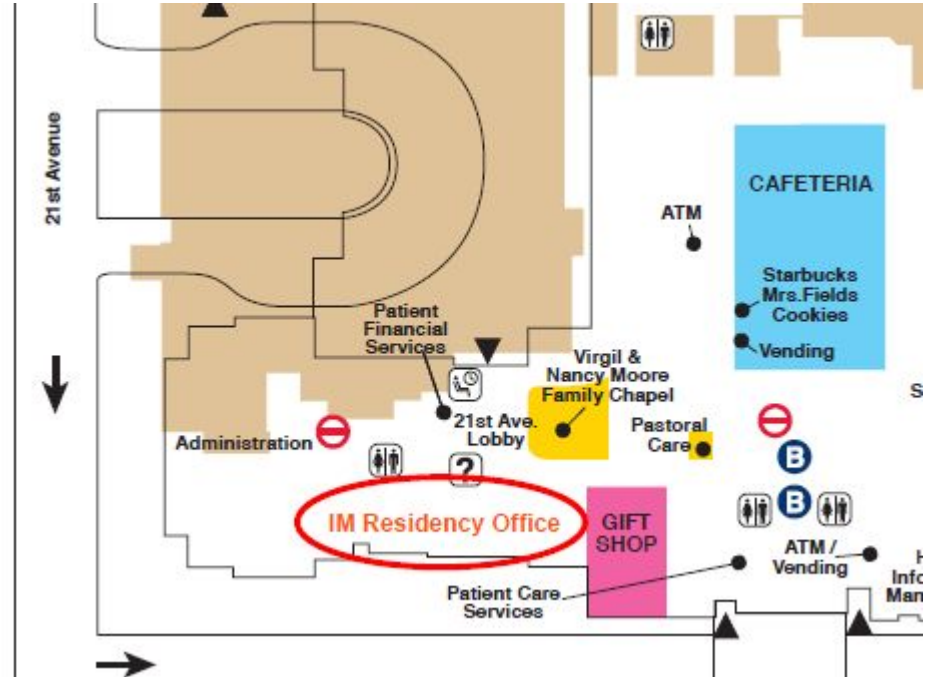
Internal Medicine @ Midtown

ASTM Internal Medicine Academic
Offices

Hospital - 1st Floor

Resources for Students

- Secure Storage



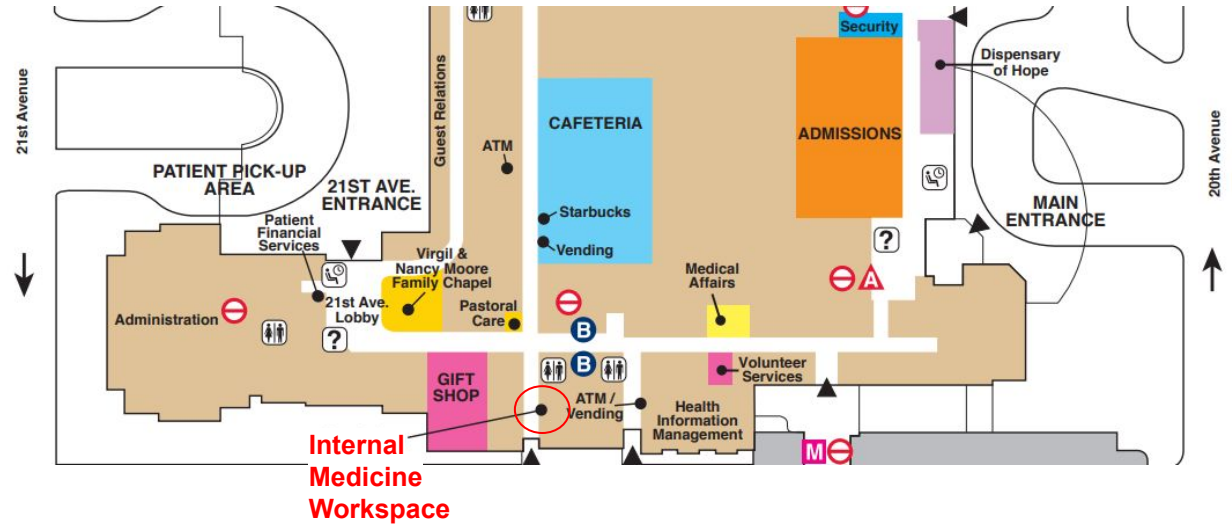
Internal Medicine @ Midtown

ASTM Resident/Student Workroom:

Hospital - 1st Floor

Resources for Students

- Computer Workstations
- Relaxation/Lounge
- Secure Storage
- Study Space
- Sleep/Call Room



Internal Medicine @ Midtown

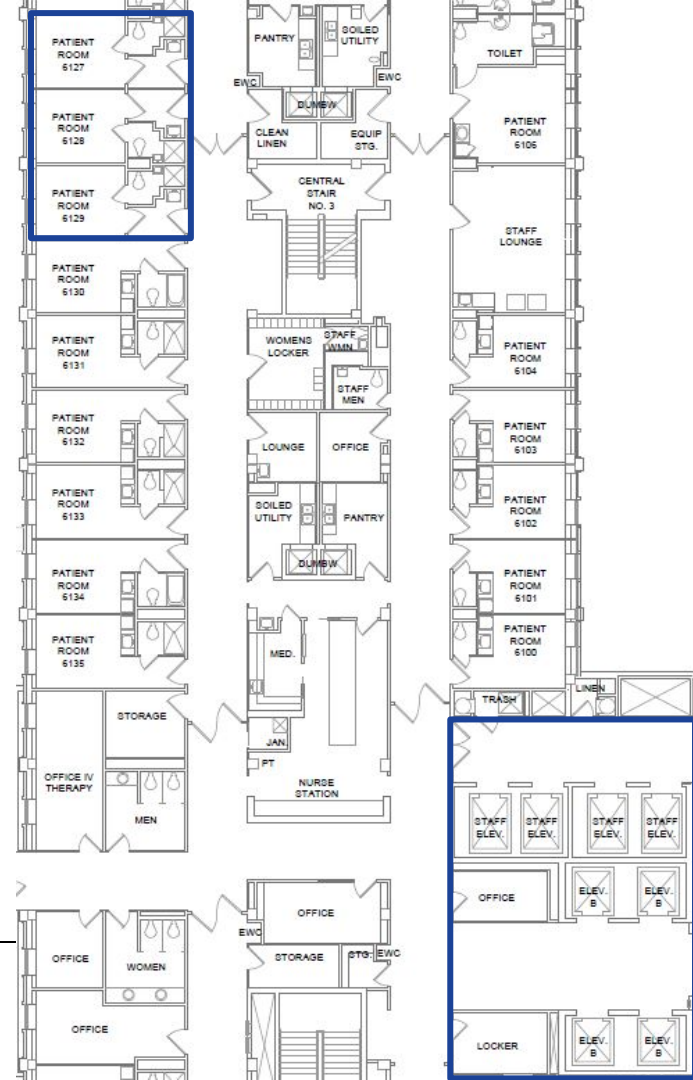
Sleep Rooms:

Hospital - 6th Floor

Resources for Students

- Sleep/Call Room

Sleep
Rooms



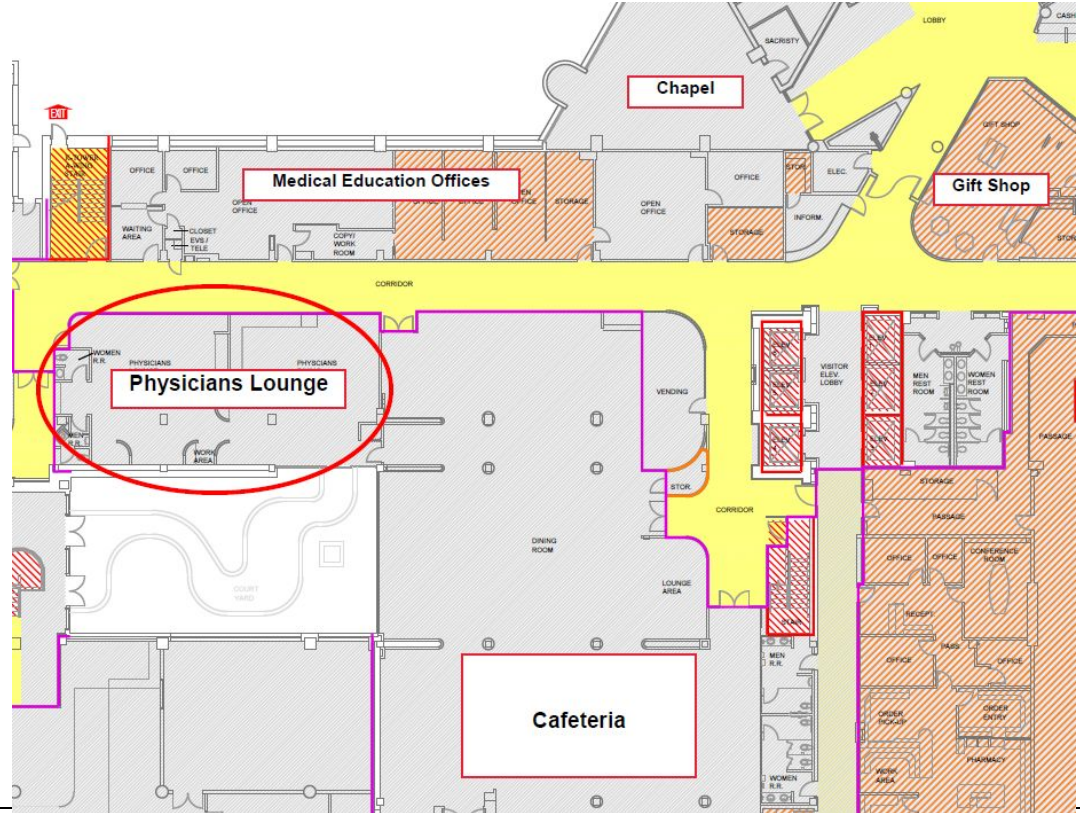
Elevators

Internal Medicine @ West

ASTW Physicians Dining Room Hospital - 1st Floor

Resources for Students

- Relaxation/Lounge
- Dining



Internal Medicine @ West

ASTW IM Workroom
Hospital - 4th Floor

Resources for Students

- Computer Workstations
- Secure Storage
- Study Space



Nashville



OB/GYN

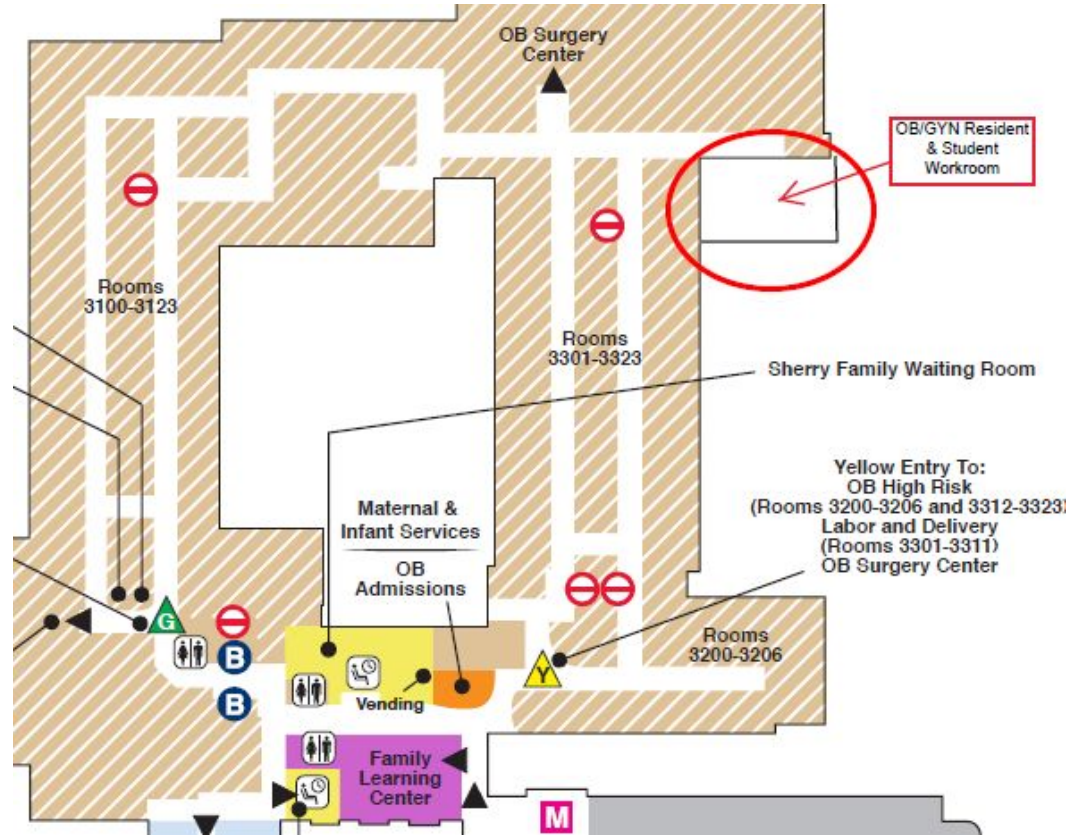
OB/GYN

ASTM OB/GYN Resident/Student Workroom

Hospital - 3rd Floor

Resources for Students

- Clinical Workspace
- Secure Storage

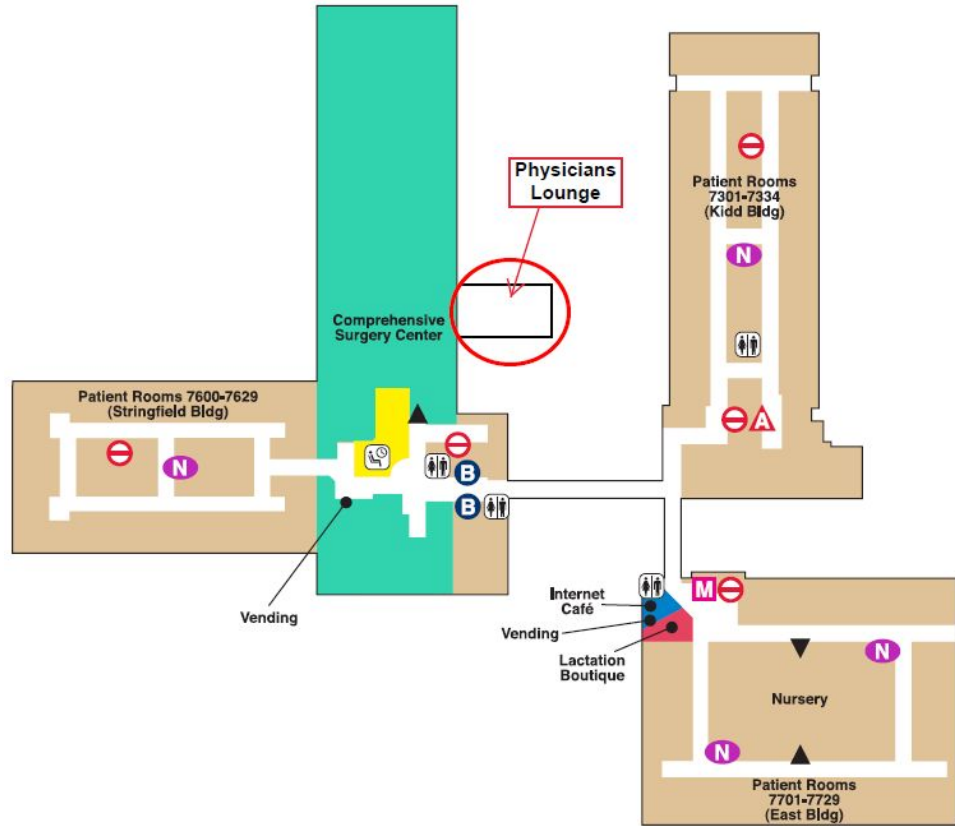


OB/GYN

ASTM OB/GYN Physicians' Lounge Hospital - 7th Floor

Resources for Students

- Relaxation/Lounge



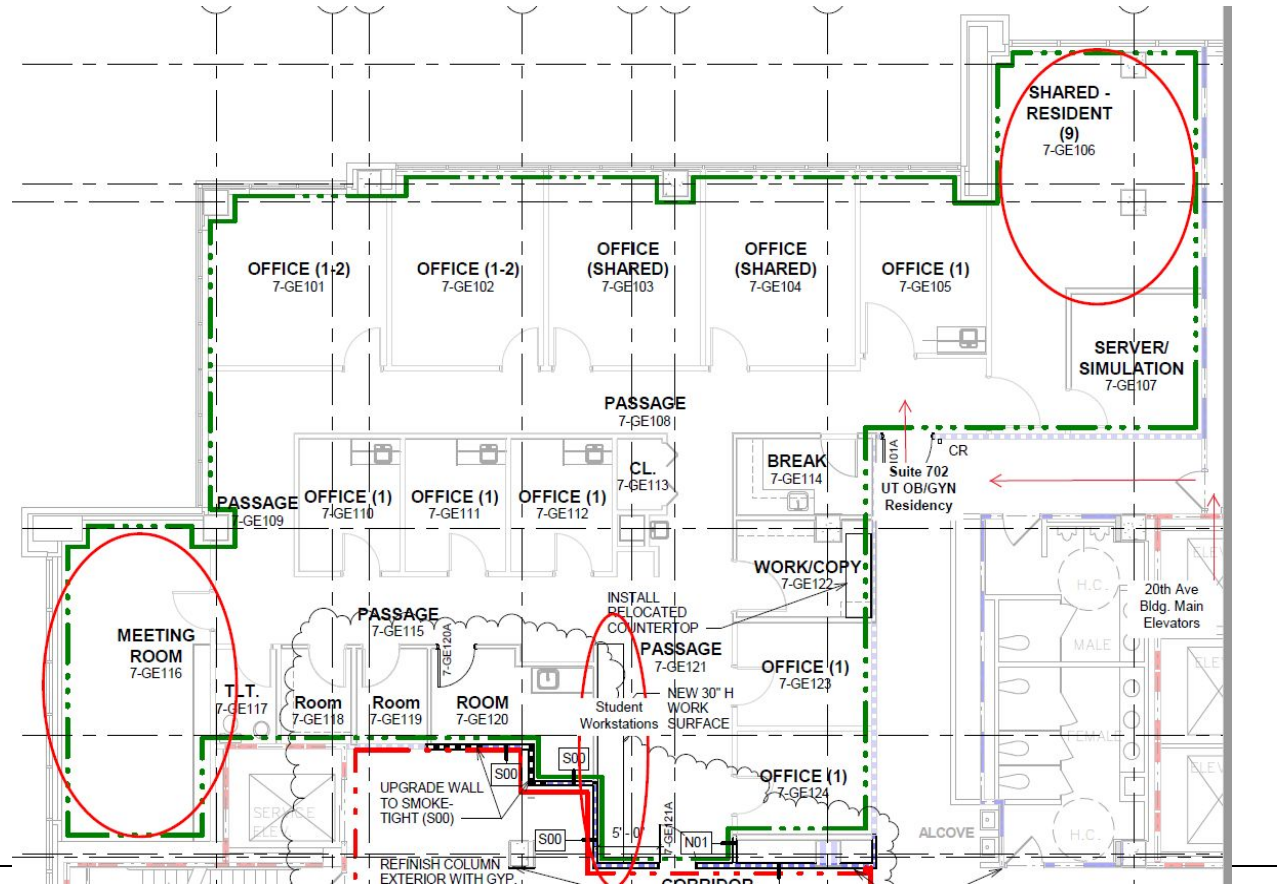
OB/GYN

OB/GYN Academic Offices

20th Avenue Building, Suite 702

Resources for Students

- Computer Workstations
- Study Space
- Secure Storage



Nashville



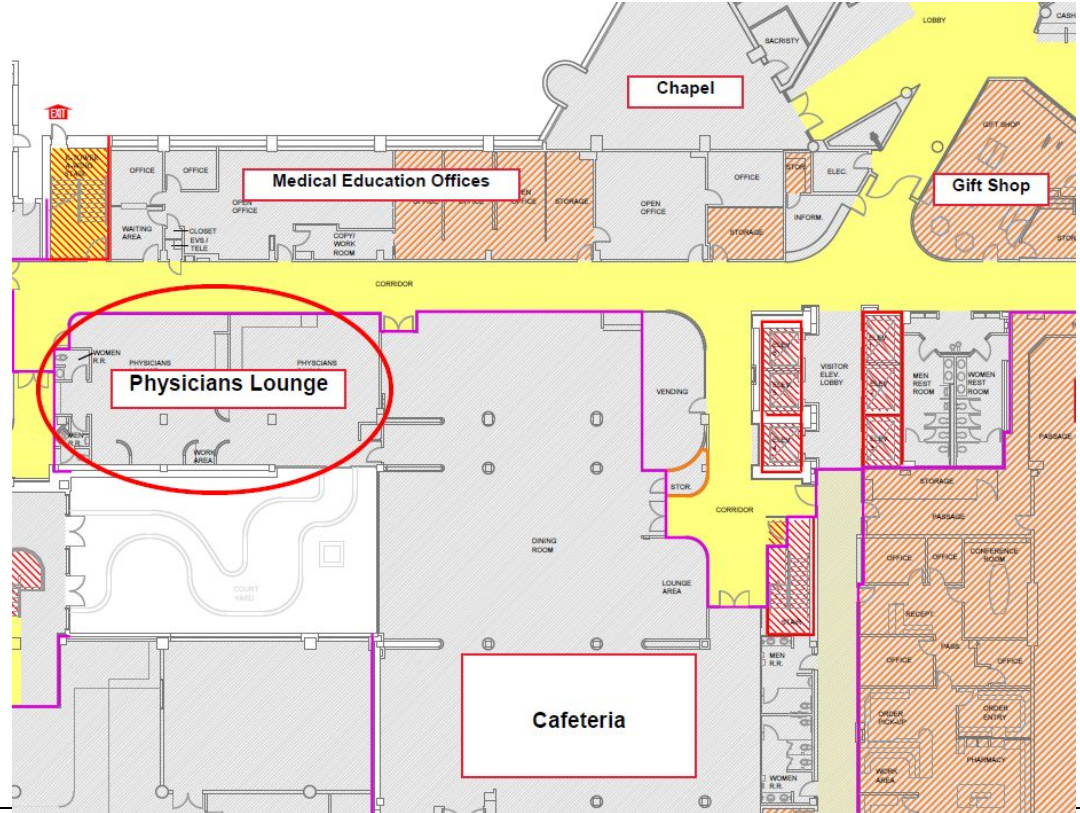
Surgery

Surgery

ASTW Physicians Dining Room Hospital - 1st Floor

Resources for Students

- Relaxation/Lounge
- Dining



Surgery

ASTW Surgery OR Lockers Hospital - 3rd Floor

Resources for Students

- Secure Storage

