

# Medical Student Study & Storage Spaces

**University of Tennessee Health Science Center  
College of Medicine - Nashville Campus  
Murfreesboro & Nashville Rotation Sites**



**Ascension**

*Listening to you, caring for you.®*

8/15/2022

# Murfreesboro

---

## Emergency Medicine

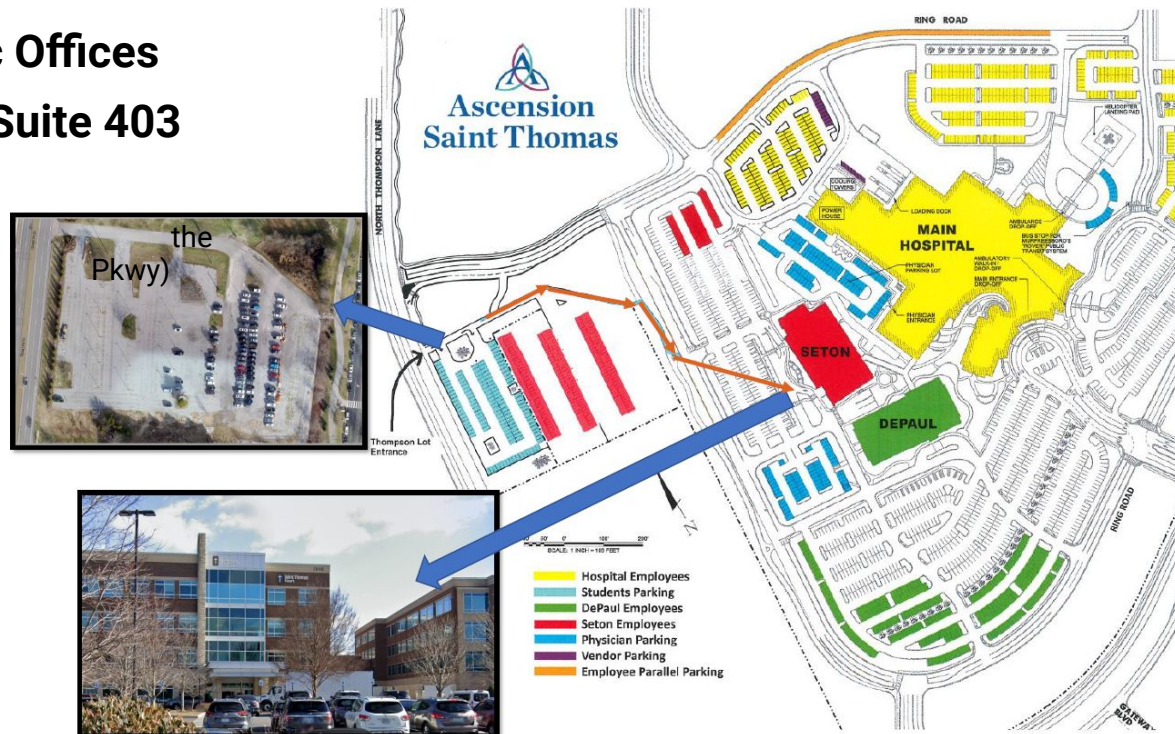
# Emergency Medicine

## Emergency Medicine Academic Offices Seton Medical Office Building, Suite 403

- Park in Gravel Lot (950 N. Thompson Lane)
- Walk across Ring Road at the crosswalk into Seton Parking Lot (1840 Medical Center)
- Enter through Seton Building main entrance, located under the awning near Saint Thomas Heart Sign

## Resources for Students

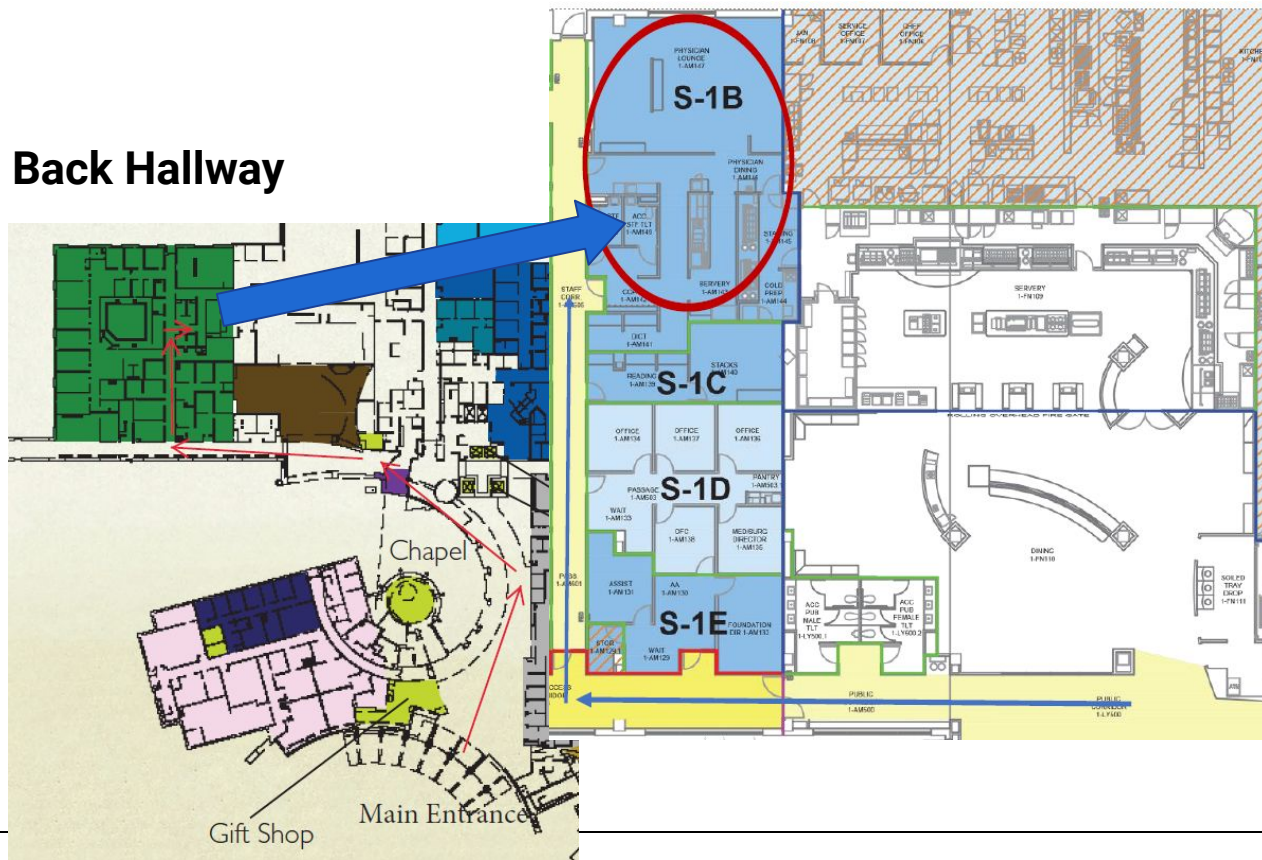
- Computer Workstations
- Relaxation/Lounge
- Secure Storage
- Study Space



# Emergency Medicine

## ASTR Physicians Lounge

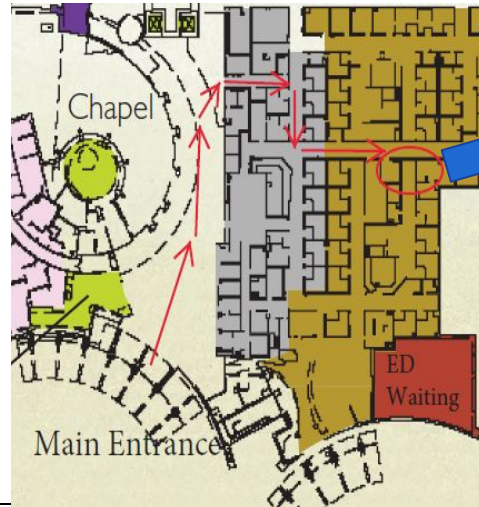
## Hospital - Administration Back Hallway



## Resources for Students

- Dining

## ASTR Emergency Department Doctor's Work Area "Doc Box"



## Resources for Students

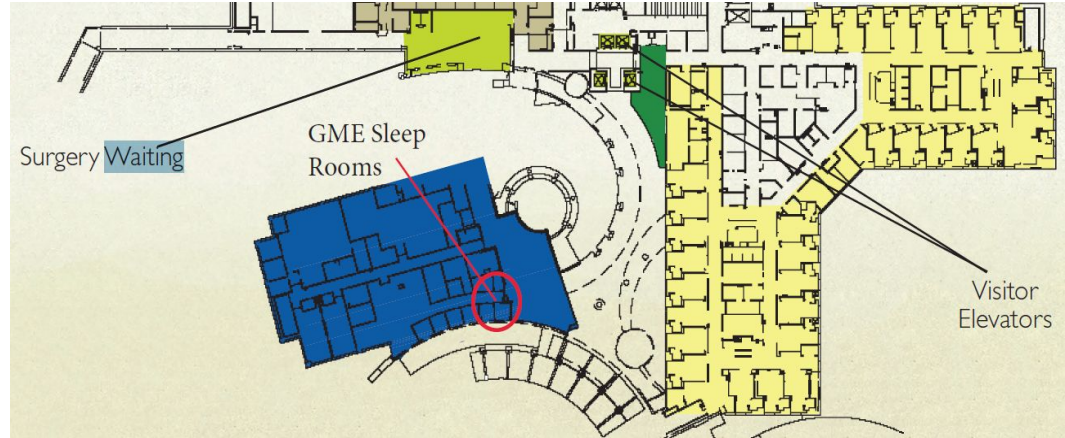
- Clinical Workspace



# Emergency Medicine

## ASTR Resident/Student Sleep Rooms

Hospital - 2nd Floor of Education Bldg (hallway adjacent to gifts shop)



## Resources for Students

- Sleep/Call Room

# Murfreesboro

---

# Family Medicine

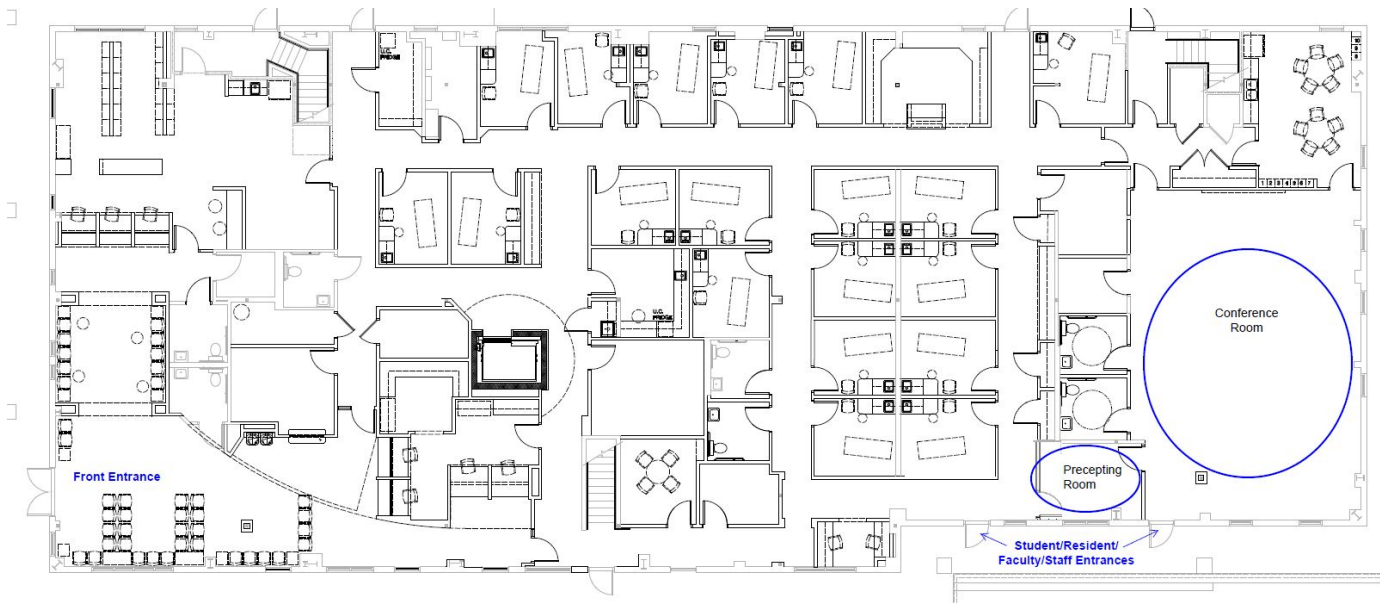
# Family Medicine

## Family Medicine Academic Offices - 1st Floor

Saint Louise Clinic (1020 N. Highland Ave.)

### Resources for Students

- Clinical Workspace
- Study Space

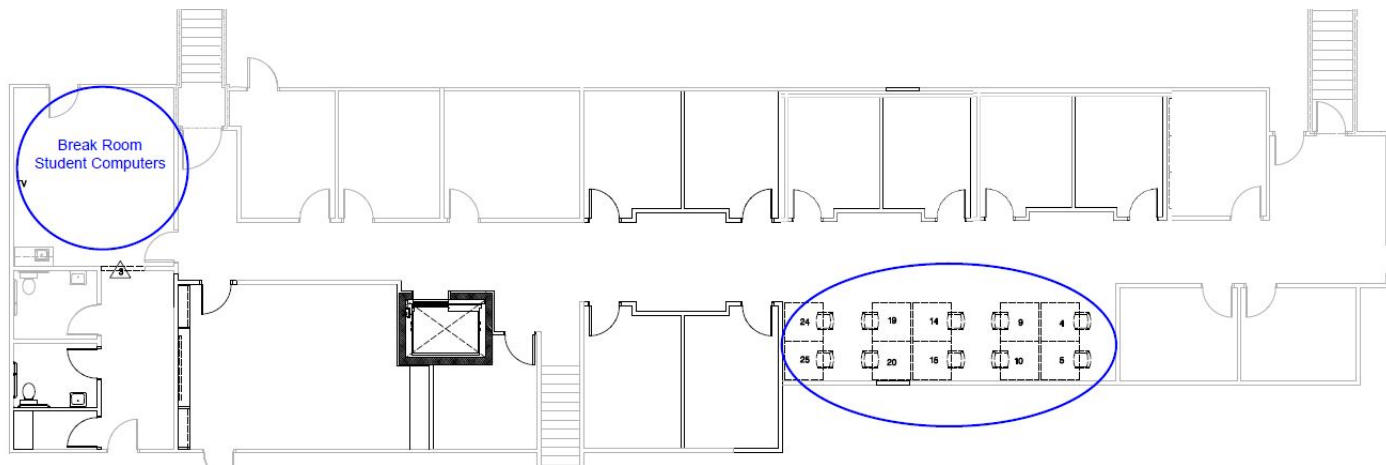




# Family Medicine

## Family Medicine Academic Offices - 2nd Floor

Saint Louise Clinic (1020 N. Highland Ave.)



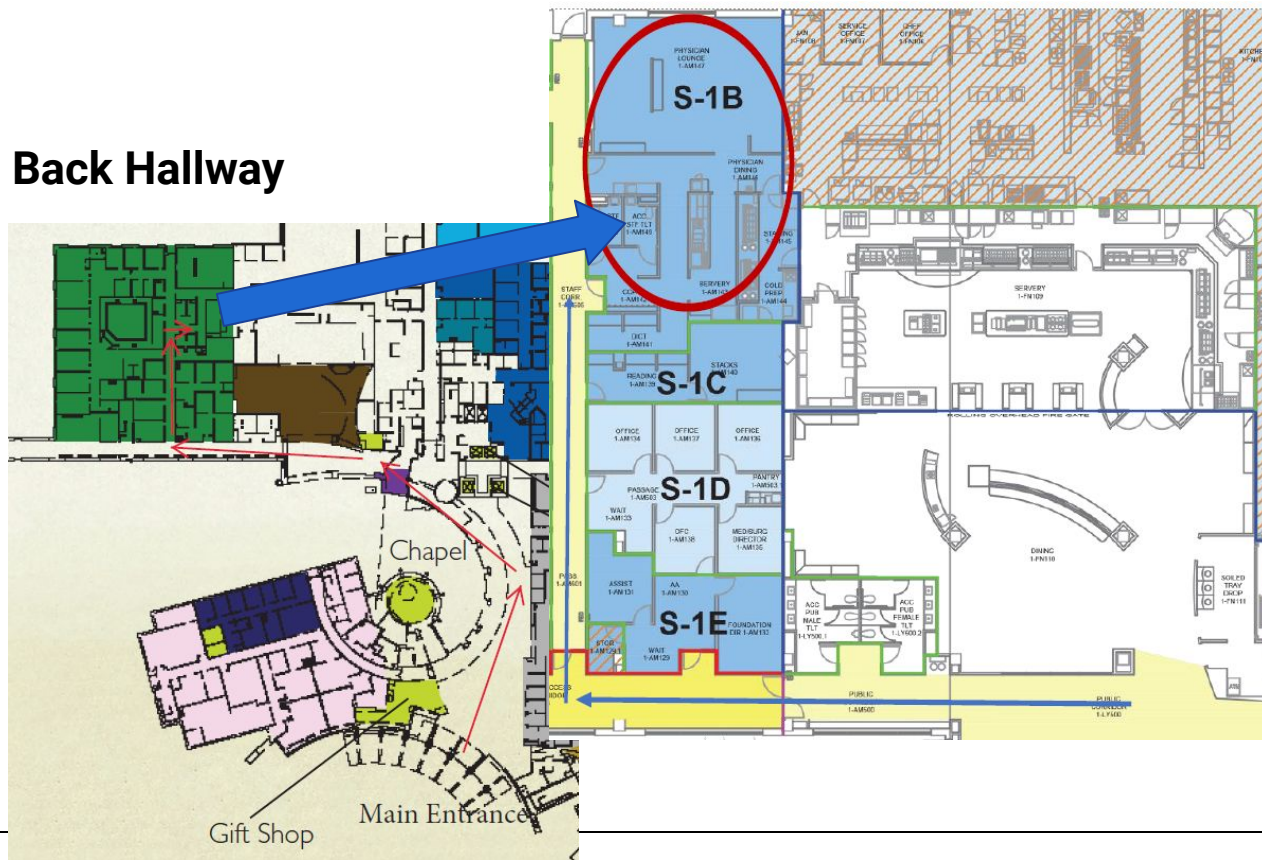
### Resources for Students

- Computer Workstations
- Relaxation/Lounge
- Secure Storage
- Study Space

# Family Medicine

## ASTR Physicians Lounge

## Hospital - Administration Back Hallway



## Resources for Students

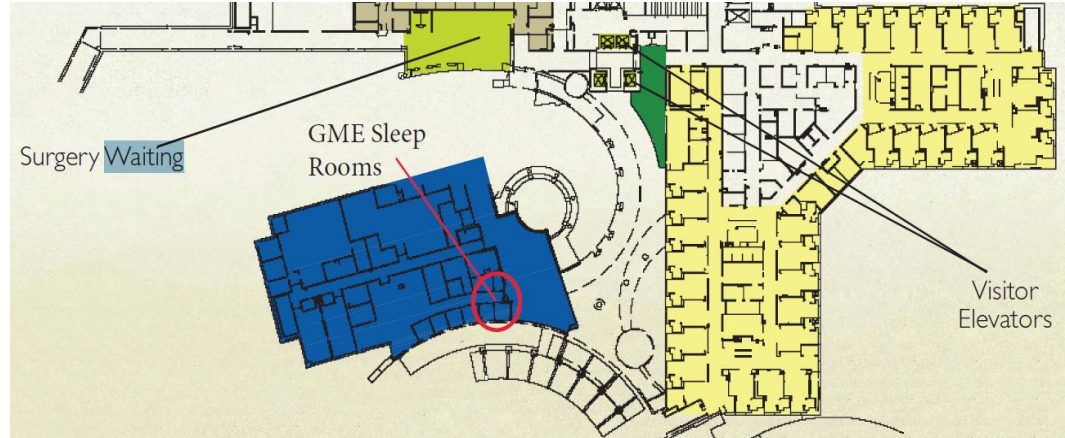
- Dining



# Family Medicine

## ASTR Resident/Student Sleep Rooms

Hospital - 2nd Floor of Education Bldg (hallway adjacent to gifts shop)



## Resources for Students

- Sleep/Call Room

# Nashville

---

# Internal Medicine

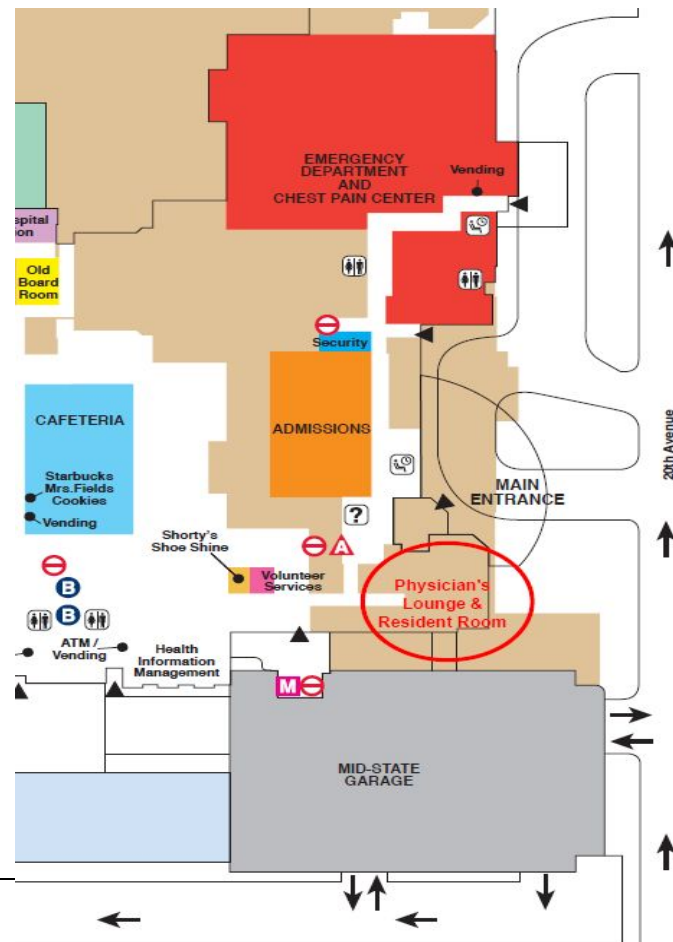
# Internal Medicine @ Midtown

## ASTM Resident/Student Workroom & Physicians' Lounge

### Hospital - 1st Floor

## Resources for Students

- Computer Workstations
- Relaxation/Lounge
- Secure Storage
- Study Space
- Dining





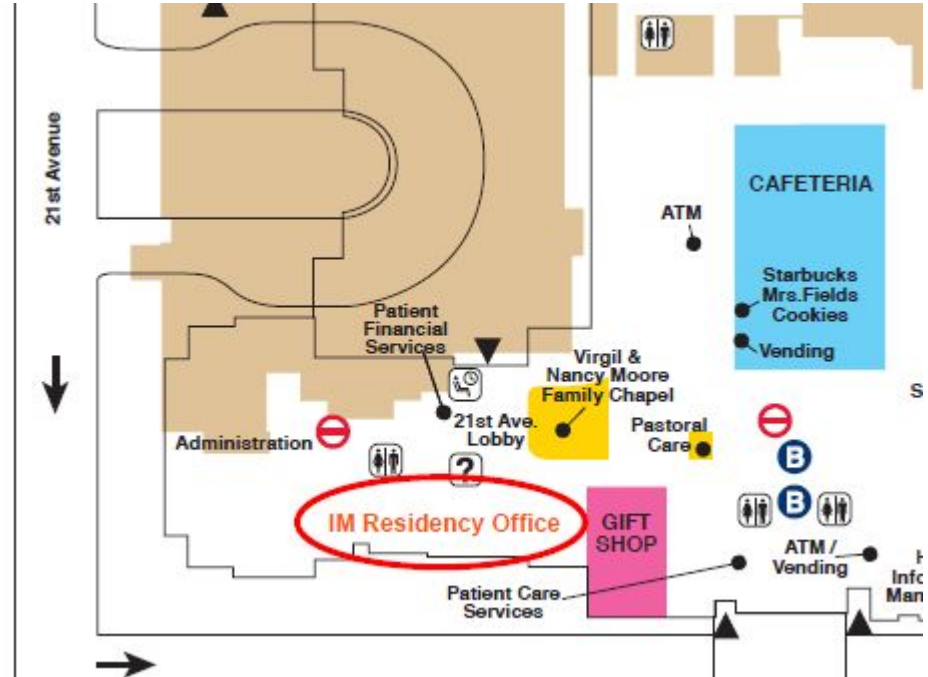
# Internal Medicine @ Midtown

## ASTM Internal Medicine Academic Offices

### Hospital - 1st Floor

## Resources for Students

- Secure Storage



# Internal Medicine @ Midtown

## ASTM Resident/Student Workroom & Sleep Rooms

Hospital - 6th Floor

### Resources for Students

- Computer Workstations
- Relaxation/Lounge
- Secure Storage
- Study Space
- Sleep/Call Room

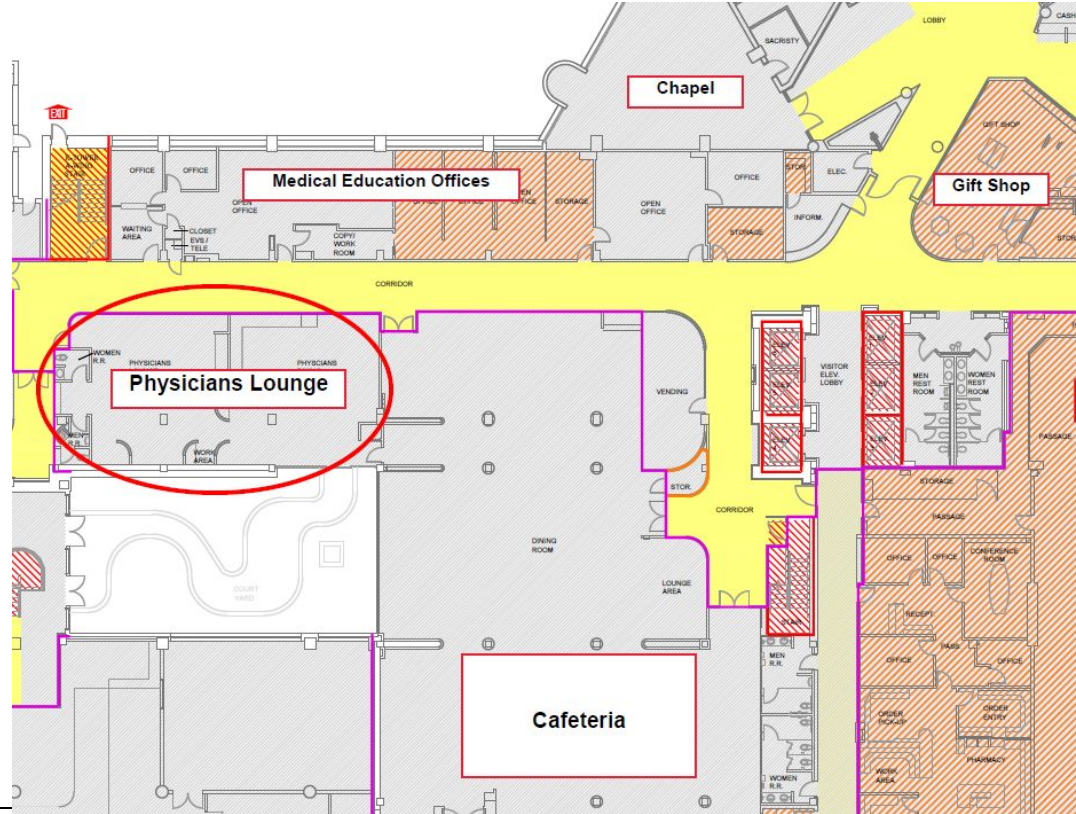


# Internal Medicine @ West

## ASTW Physicians Dining Room Hospital - 1st Floor

### Resources for Students

- Relaxation/Lounge
- Dining



# Internal Medicine @ West

## ASTW IM Workroom Hospital - 4th Floor

### Resources for Students

- Computer Workstations
- Secure Storage
- Study Space



# Nashville



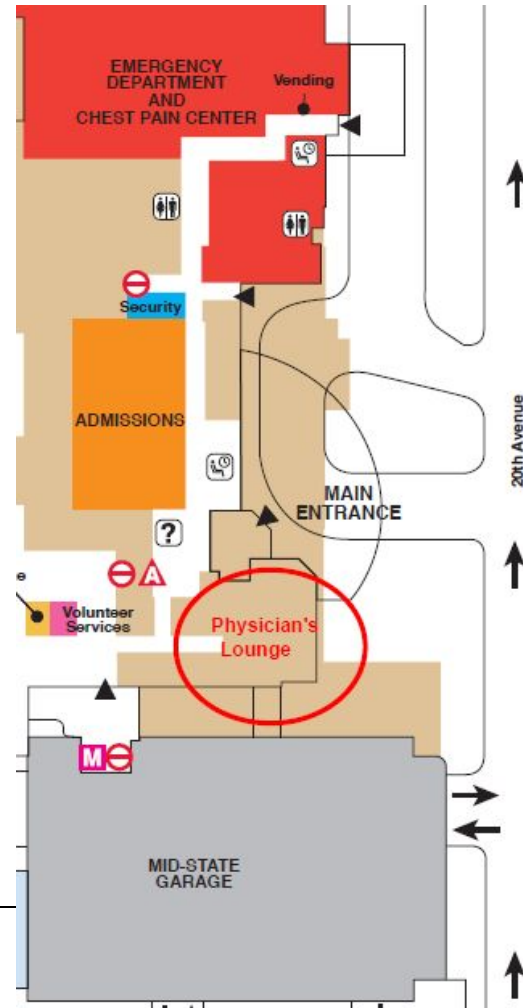
# OB/GYN

# OB/GYN

## ASTM Physicians' Lounge Hospital - 1st Floor

### Resources for Students

- Relaxation/Lounge
- Dining





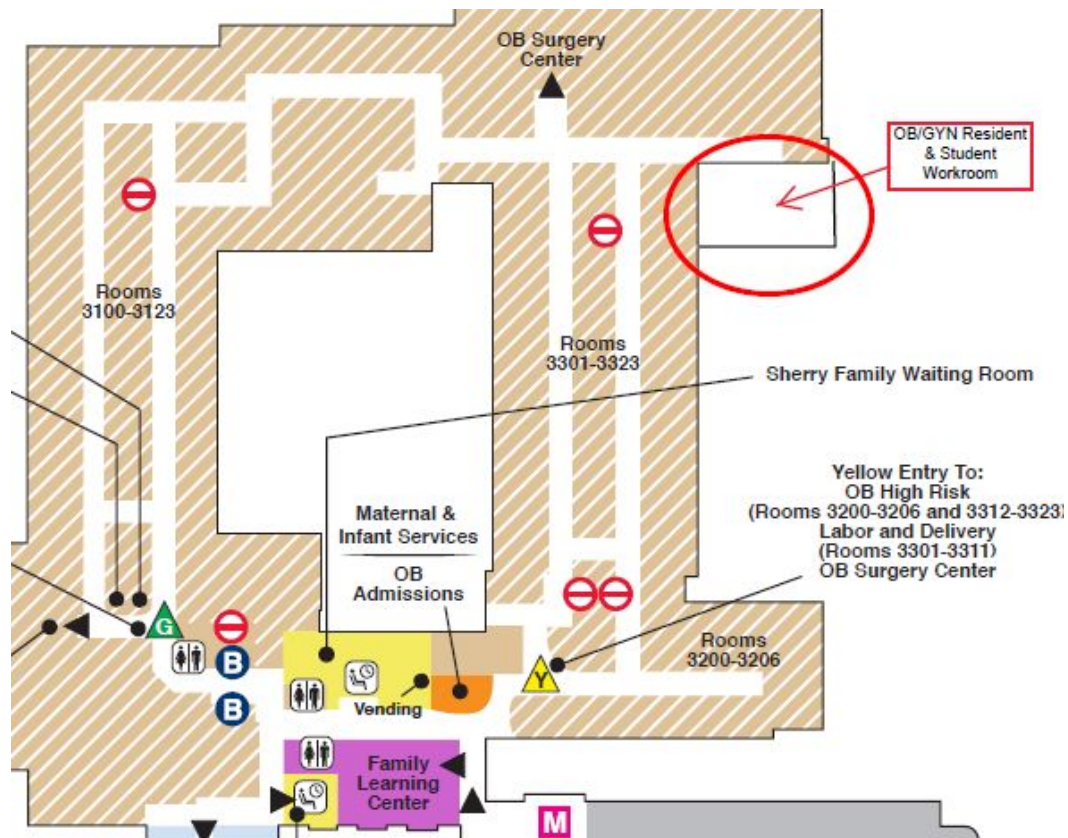
# OB/GYN

## ASTM OB/GYN Resident/Student Workroom

### Hospital - 3rd Floor

## Resources for Students

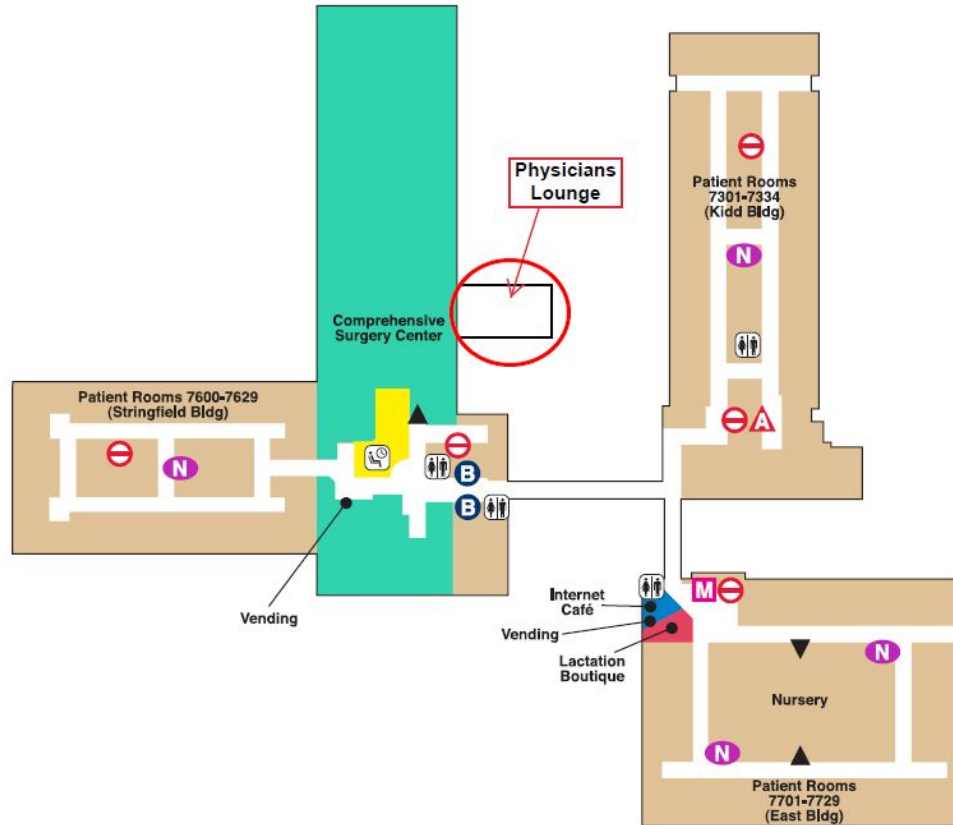
- Clinical Workspace
- Secure Storage



# OB/GYN

## ASTM OB/GYN Physicians' Lounge Hospital - 7th Floor

### Resources for Students • Relaxation/Lounge

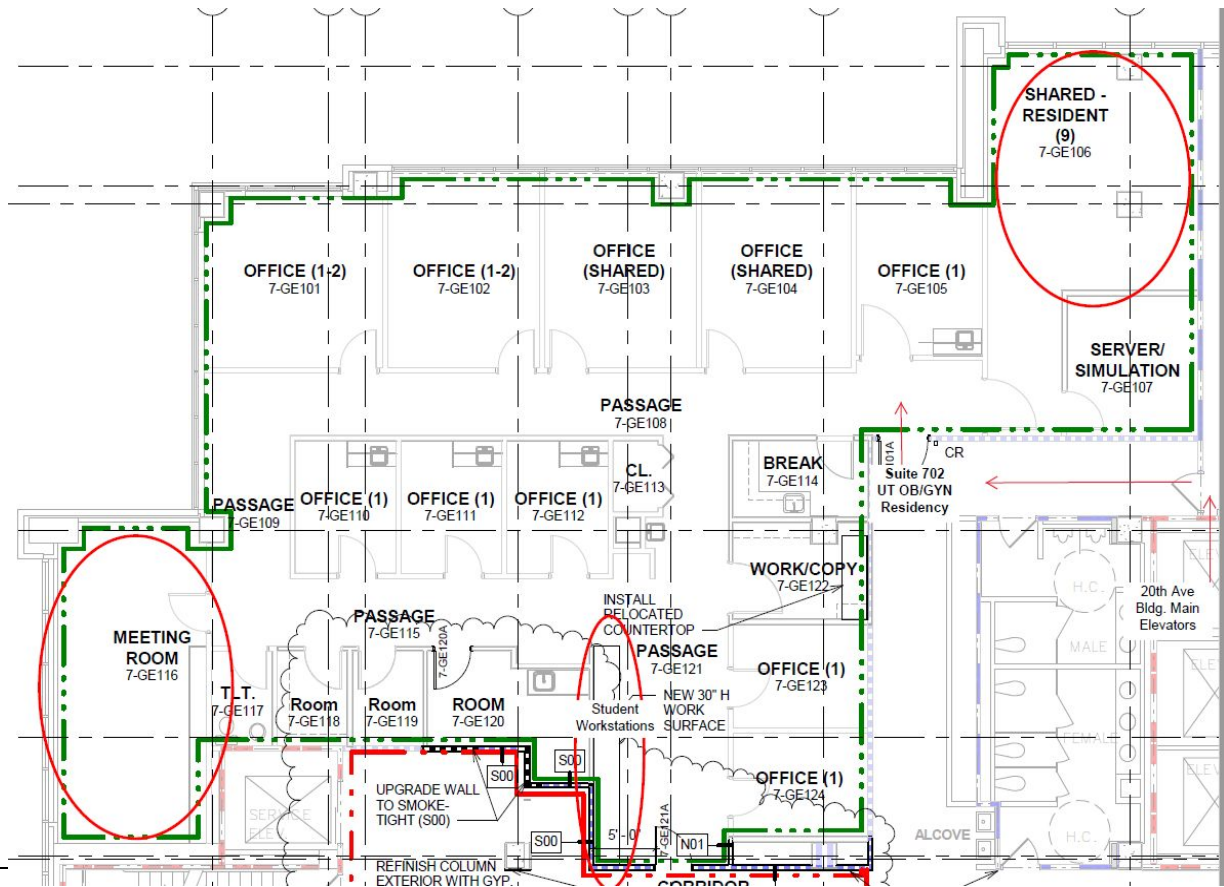


# OB/GYN

## OB/GYN Academic Offices 20th Avenue Building, Suite 702

### Resources for Students

- Computer Workstations
- Study Space
- Secure Storage



# Nashville

---

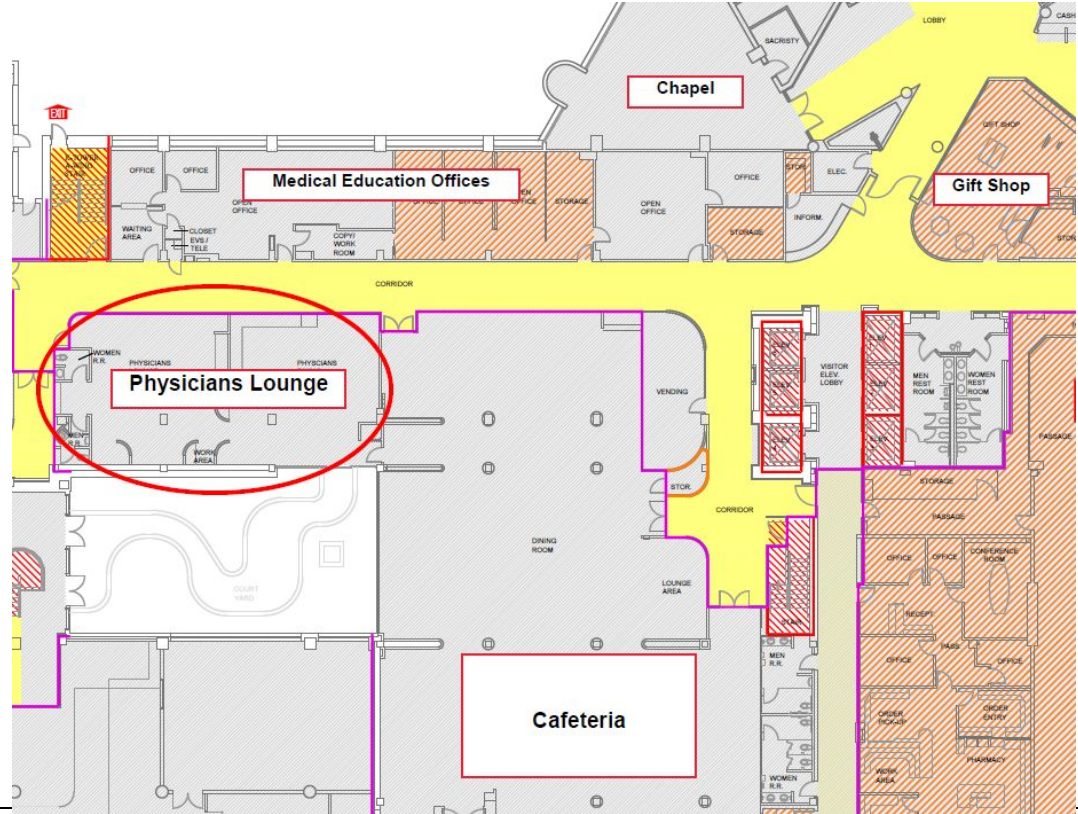
# Surgery

# Surgery

## ASTW Physicians Dining Room Hospital - 1st Floor

### Resources for Students

- Relaxation/Lounge
- Dining





Page 10 of 10

## Hospital - 4th Floor

- Computer Workstations
- Secure Storage
- Study Space
- Relaxation/Lounge





# Surgery

## ASTW Surgery OR Lockers Hospital - 3rd Floor

### Resources for Students

- Secure Storage

