

What's Neighborhood Got to Do With It?

Just about everything when it comes to
staying healthy in Memphis.

Phyllis G. Betts, Director

Contact pbetts@memphis.edu

Center for Community Building and
Neighborhood Action

School of Urban Affairs and Public Policy
The University of Memphis

W. Richard Janikowski, Director
Contact: rjankwsk@memphis.edu

Center for Community Criminology and Research

Department of Criminology and Criminal Justice
The University of Memphis

Key Sources

- Populations of Color in Tennessee: Health Status Report. Tennessee Department of Health Office of Policy, Planning, and Assessment and Office of Minority Health. Kenneth Robinson, et. al. 2007.
- Center for Community Building and Neighborhood Action: analysis of birth and infant mortality and other indicators for Memphis and Shelby County. Ongoing.
- Center for Community Criminology and Research: neighborhood crime analysis for Memphis and Shelby County. Ongoing.

Millennial Challenge: Health Disparities

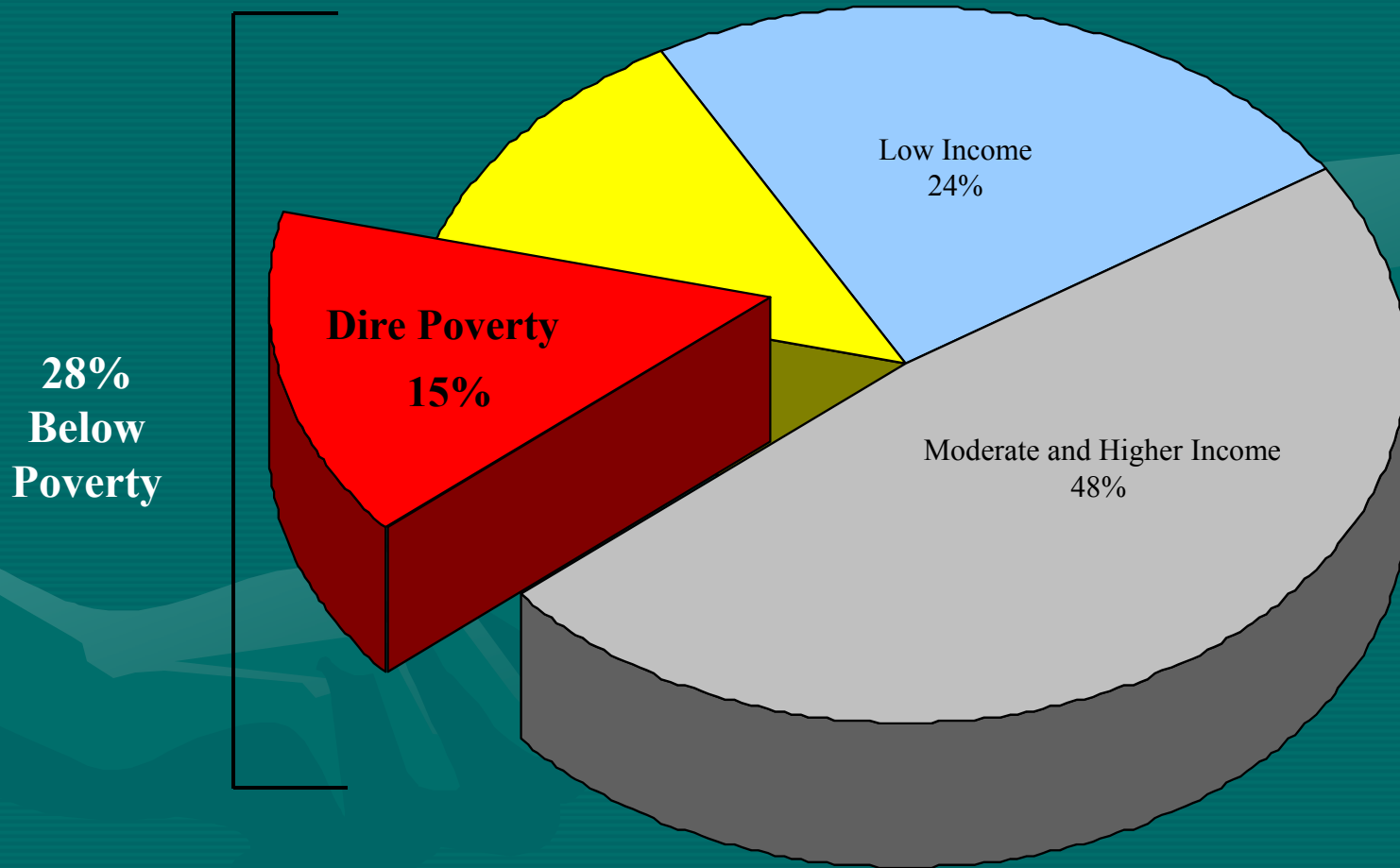
- Wellness and disease gradient
- The Poverty Predictor
- The Education Predictor
- Race and ethnicity as independent predictors
- Limitations of the access remedy
- Intergenerational transmission:
it starts with the kids (TN LifeStart goals)

Poverty as a Risk Factor: It Starts with the Kids

Heightened probability outcomes:

- Infant mortality/prematurity/low birth weight and related diagnosis
- Child obesity and diabetes
- Lead poisoning/other heavy metal toxins
- Asthma/other respiratory diagnosis (second hand smoke)
- Nutrition-related developmental and cognitive diagnoses
- Stimulation-related developmental shortfalls
- Injuries from abuse, neglect, and neighborhood violence
- Homicide

Child Poverty in Shelby County



Risk Factors: Child Poverty

2008 Estimates for Shelby County:
128,000 Low Income *Children* (52%)

- Low Income: 100-200% poverty level →
 - \$36,620 – \$44,100

- 59,000 kids
24% of all kids

- Below Poverty: →
 - \$18,310 family of three
 - \$22,050 family of four

- 69,000 kids
28% of all kids

- Dire Poverty: < 50% poverty level →
 - \$9,155 – \$11,025

- 37,000 kids
15% of all kids

UT: CANDLE COHORT STUDY

- Mothers and their children pre-natal to age three
- Over half of files screened at The Med ineligible because of pre-existing health conditions
- Pre-natal nutritional deficiencies clear
- Risk factors beginning to be identified for mothers and kids at one year clinic visit

Growing Evidence

Poverty, Stress, and Health

- Cortisol, adrenalin, and inflammation
- Biological markers vs. self-reports
- Depression, self-medication, and immobilization vs. sense of efficacy and proactive self-care
- Apparently self-destructive behavior is not just about poor self-esteem

Stress Mediators: Access to Resources and Social Support

- Family
- Work
- Schools
- Neighborhoods

Getting By in the Middle Class (with a little help from my friends)

- Health Clubs and Personal Trainers
- “Life Coaching”
- Severance Pay and Outplacement

Neighborhood Risks and Assets

“High Risk Neighborhoods” means

- Concentrated poverty and family risk factors
- Residential instability
- Limited access to neighborhood-level resources

Mobilizing Memphis to Tackle Health Disparities

- Clinical practitioners cannot do it alone, nor can they “go it alone”
- More holistic training yes
- Missionary expectations no

Mobilizing Memphis

- HOPE and Healing
- Methodist Center of Excellence in Faith and Health
- Congregational Health Network
- Centering Pregnancy, Blues Project, and the Moses Model at Hollywood Clinic
- From the New Mothers Project to visiting FNPs and lay health networks

Mobilizing Memphis

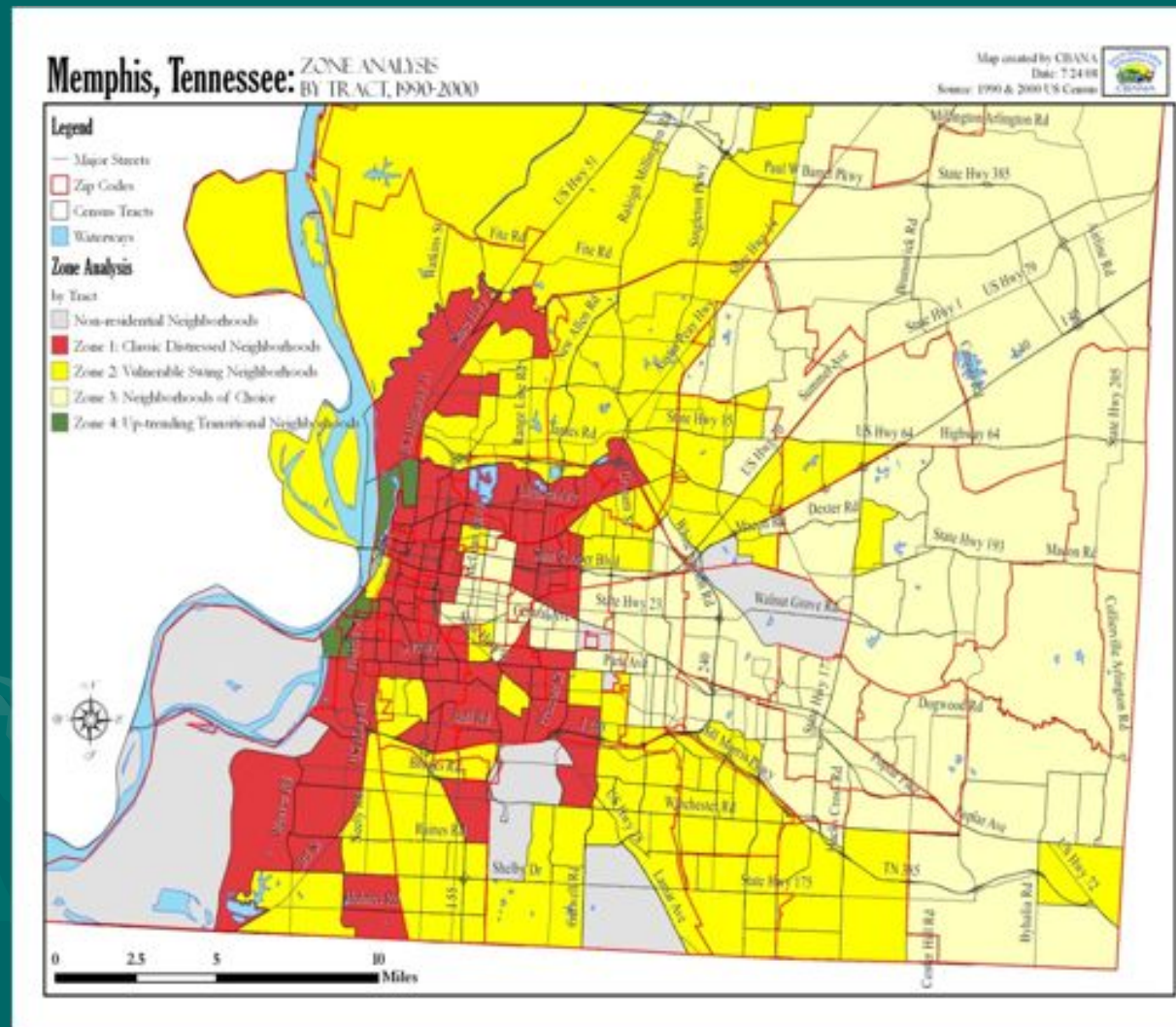
- Reducing poverty: education, workplace dignity and the living wage
- From early intervention to site-based outreach and supportive services for high stress populations
 - From public housing to Memphis Hope
 - From Estival Place to Safeways in Autumn Ridge

Mobilizing Memphis

- Reducing poverty: education, workplace dignity and the living wage
- From early intervention to site-based outreach and supportive services for high stress populations
 - From public housing to Memphis Hope
 - From Estival Place to Safeways in Autumn Ridge

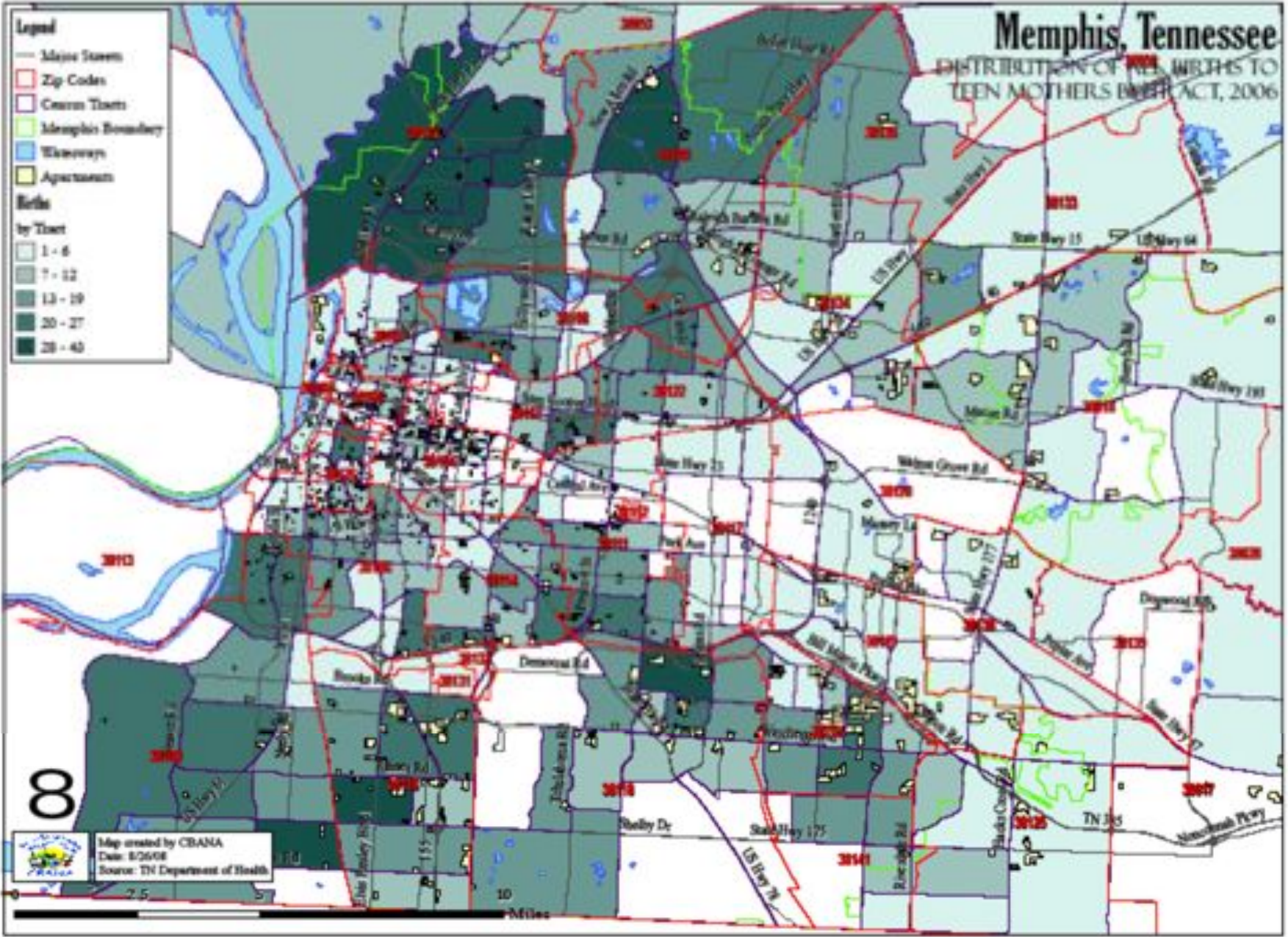
Making Strategic Linkages

- **Getting Started:**
Neighborhood Risk and Asset Zones
- **InfoWorks Memphis**
 - On-line community and neighborhood indicators
 - Ten Domains, including Health and Mental Health
 - Mapping Risks
 - Mapping Assets



Memphis, Tennessee

DISTRIBUTION OF ALL BIRTHS TO TEEN MOTHERS BY ZIP CODE, 2006



Memphis, Tennessee

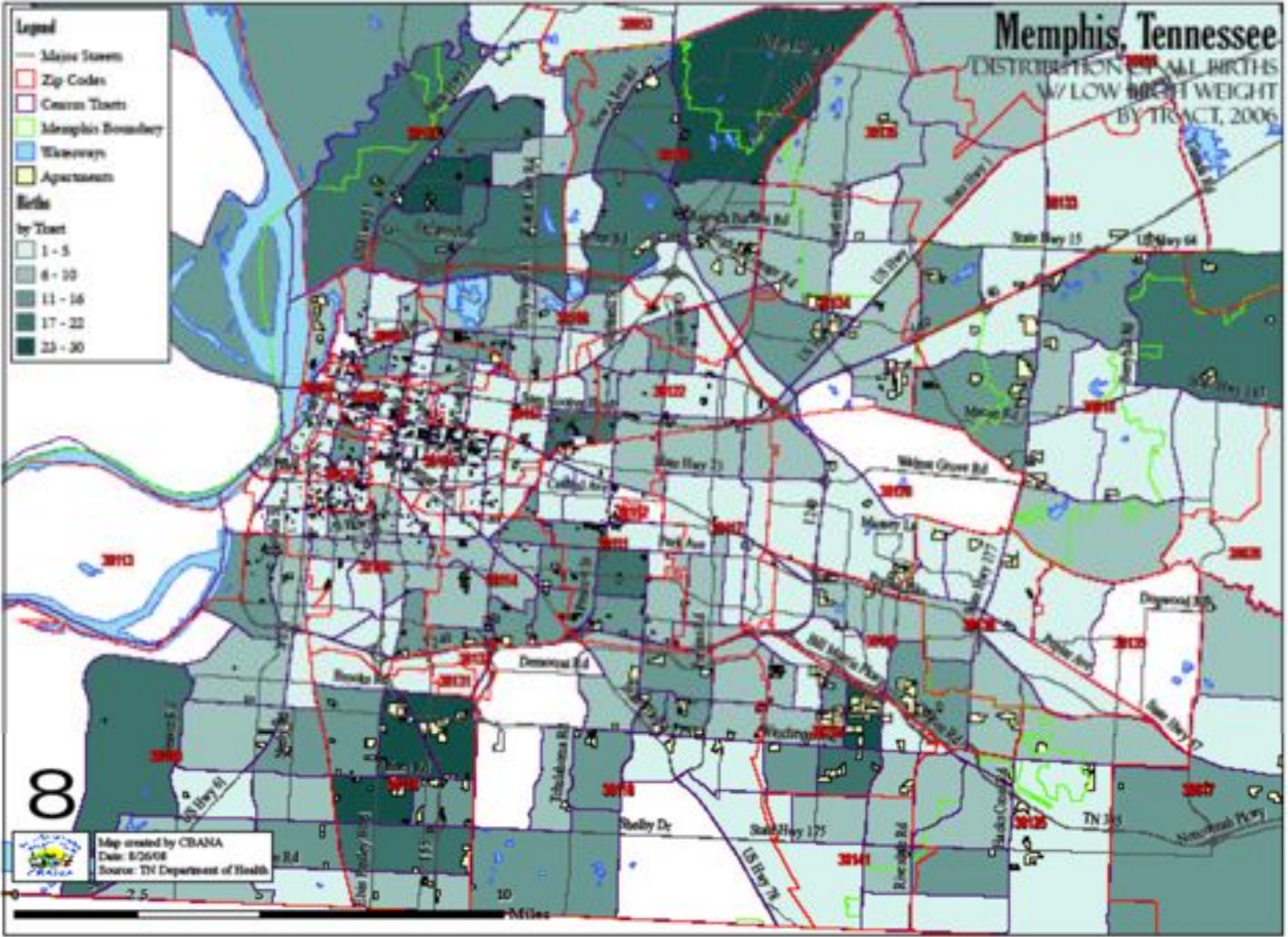
DISTRIBUTION OF ALL BIRTHS W/ LOW BIRTH WEIGHT BY TRACT, 2006

Legend

- Major Streets
- Zip Codes
- Census Tracts
- Memphis Boundary
- Waterways
- Airports

Births
by Tract

□	1 - 5
□	6 - 10
□	11 - 16
□	17 - 22
□	23 - 30



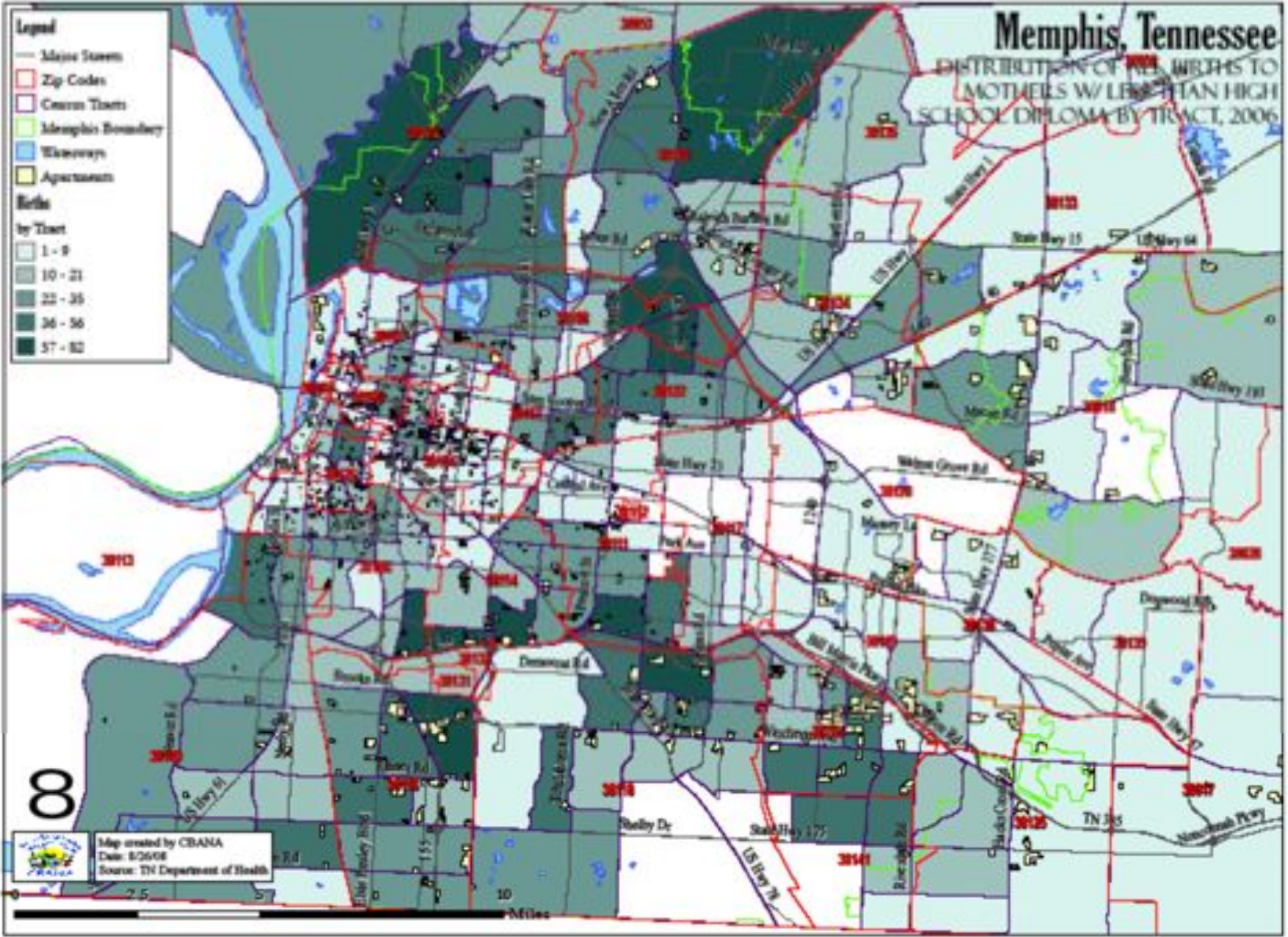
8

Map created by CBANA
Date: 8/26/08
Source: TN Department of Health

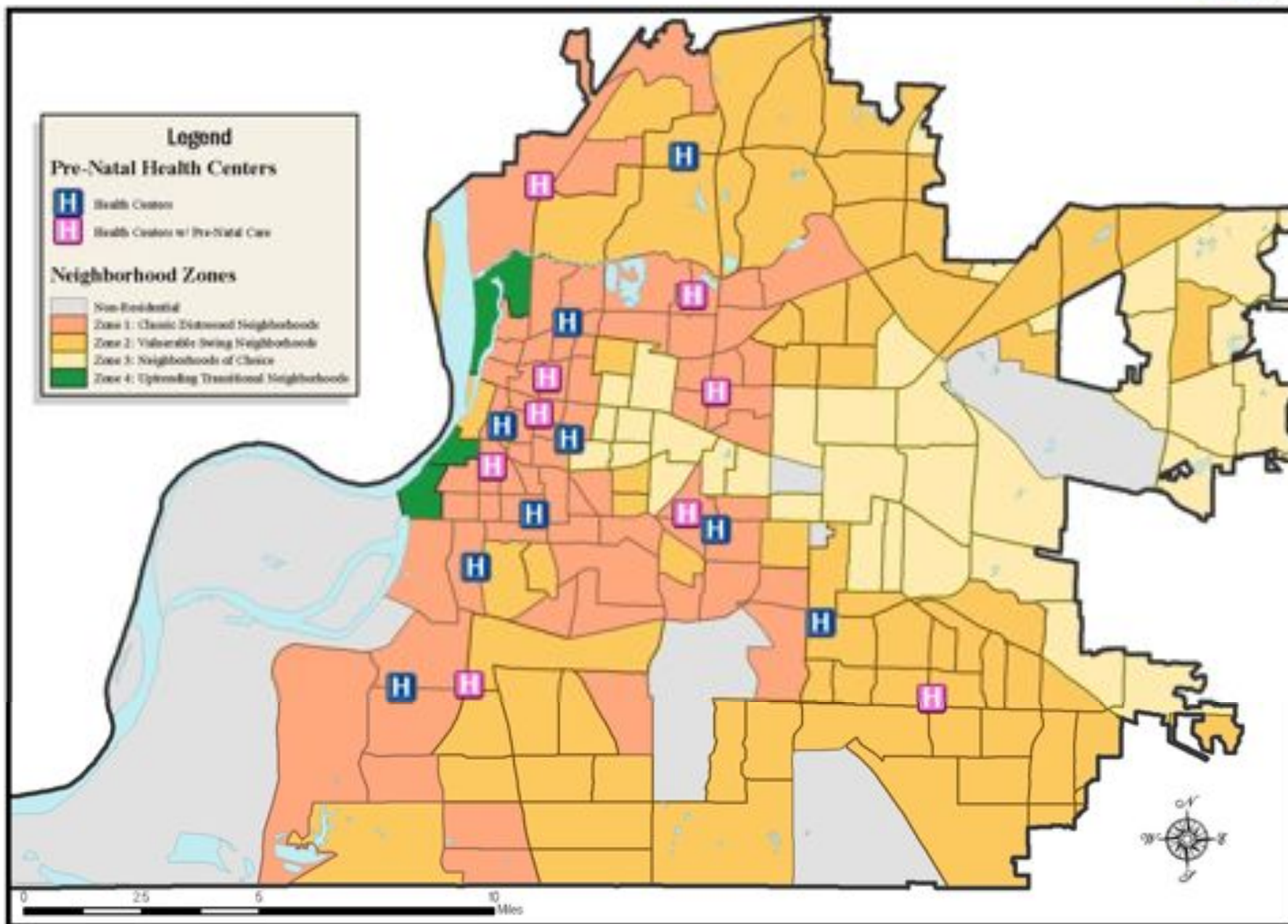


Memphis, Tennessee

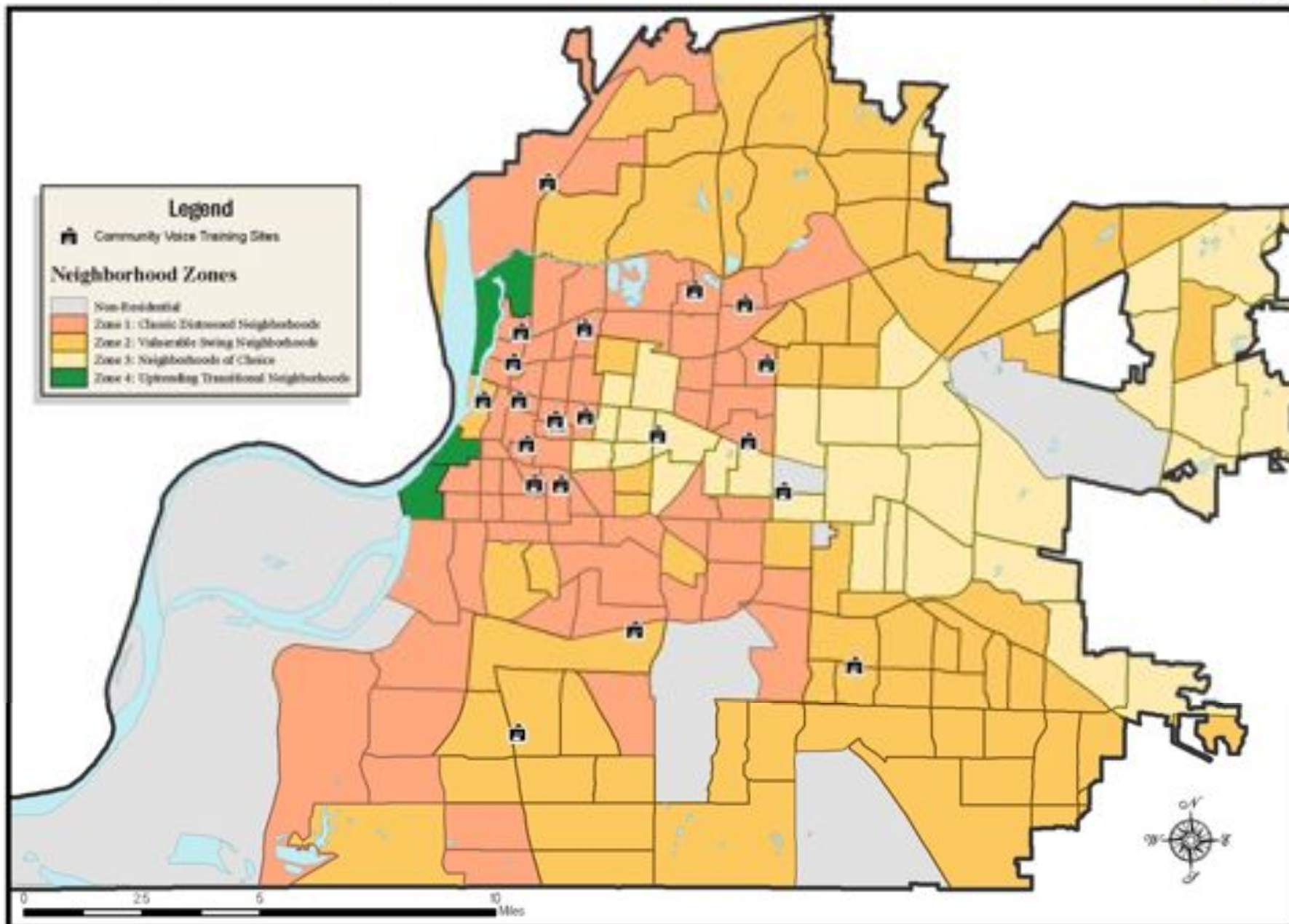
DISTRIBUTION OF NEW BIRTHS TO MOTHERS W/ LESS THAN HIGH SCHOOL DIPLOMA BY TRACT, 2006



Health Centers w/ Focus on Pre-Natal Care - Memphis, TN

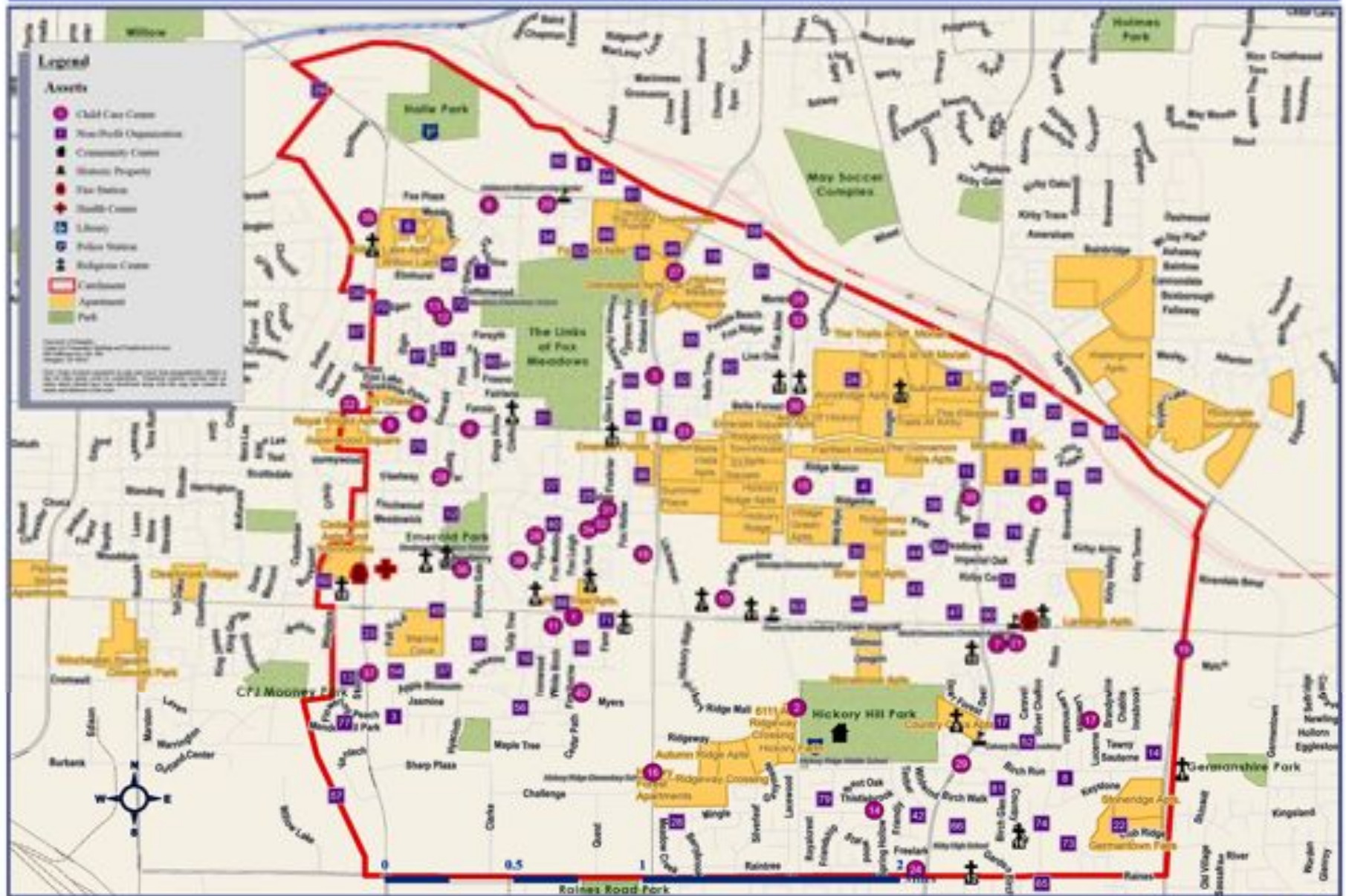


Community Voices Training Sites (2008) - Memphis, TN



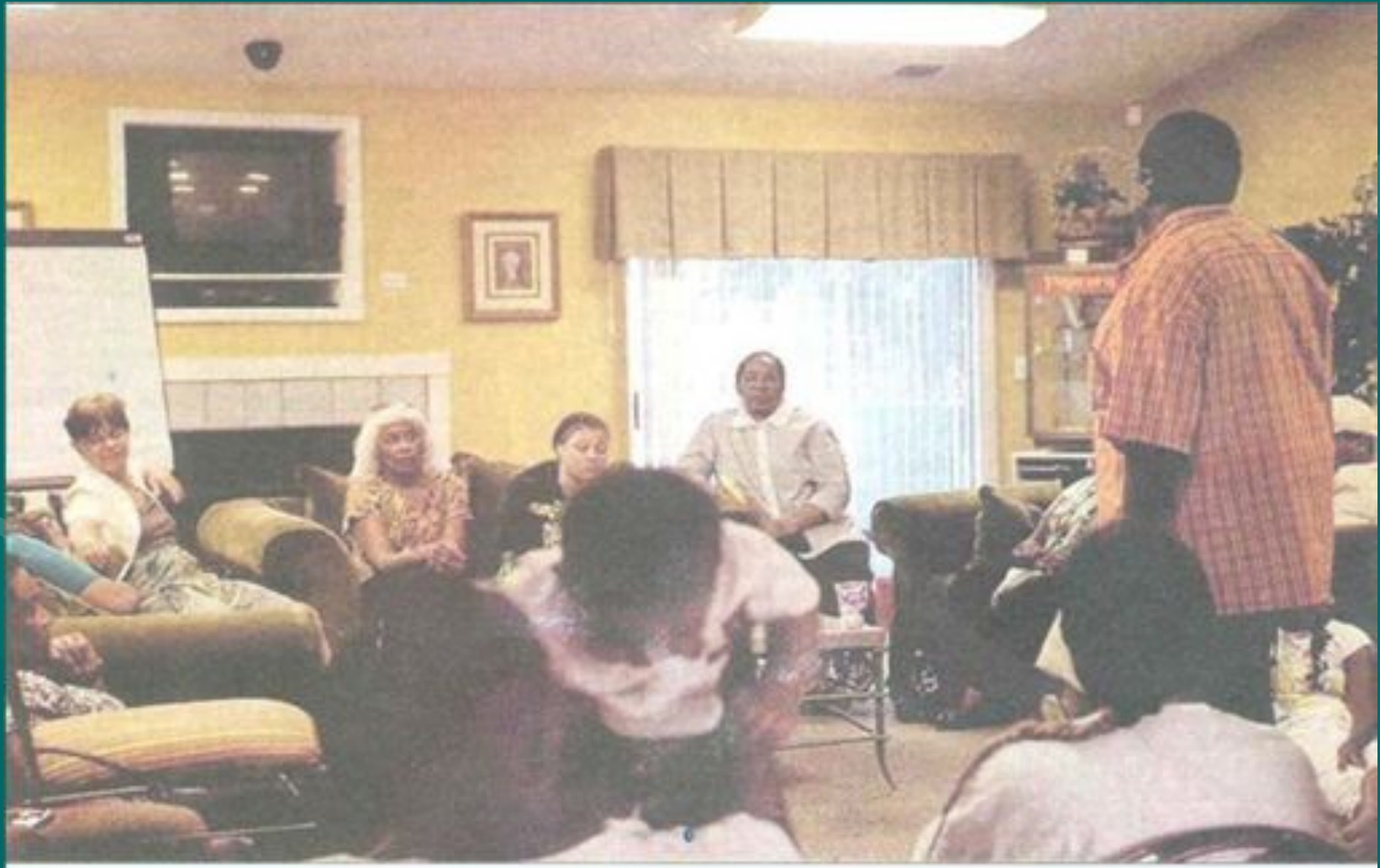
Southeast Memphis (38115) - Apartment Clusters

Asset Map



*Reaching families where they live means being
aware of and mobilizing neighborhood-level
assets that can be linked in meaningful ways
with community-wide health promotion
(and other problem solving strategies.)*

Reaching Families Where They Live: Peacemaking Circles at Autumn Ridge



Am I safe?

Shooting at Dunlap and Looney nothing out of the ordinary



By Mike Ma

Gregory Grandberry, 2, looks out from the house of his great-grandmother, Fannie Hines, on Dunlap on Friday. Earlier in the day, a 19-year-old man was shot in the arm at the corner of Dunlap and Looney and taken to The Med. The shooter was not in custody late Friday, and the incident is under investigation. Residents say gunfire is common in the neighborhood.

SAFWAYS

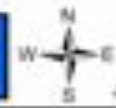
Problem Analysis

Offenses by Census Block - 2007

The background is a solid teal color. In the lower half, there is a faint, semi-transparent silhouette of two hands shaking, symbolizing agreement or partnership. The text is centered in the upper half in a white, serif font.

0 2.5 5 10 Miles

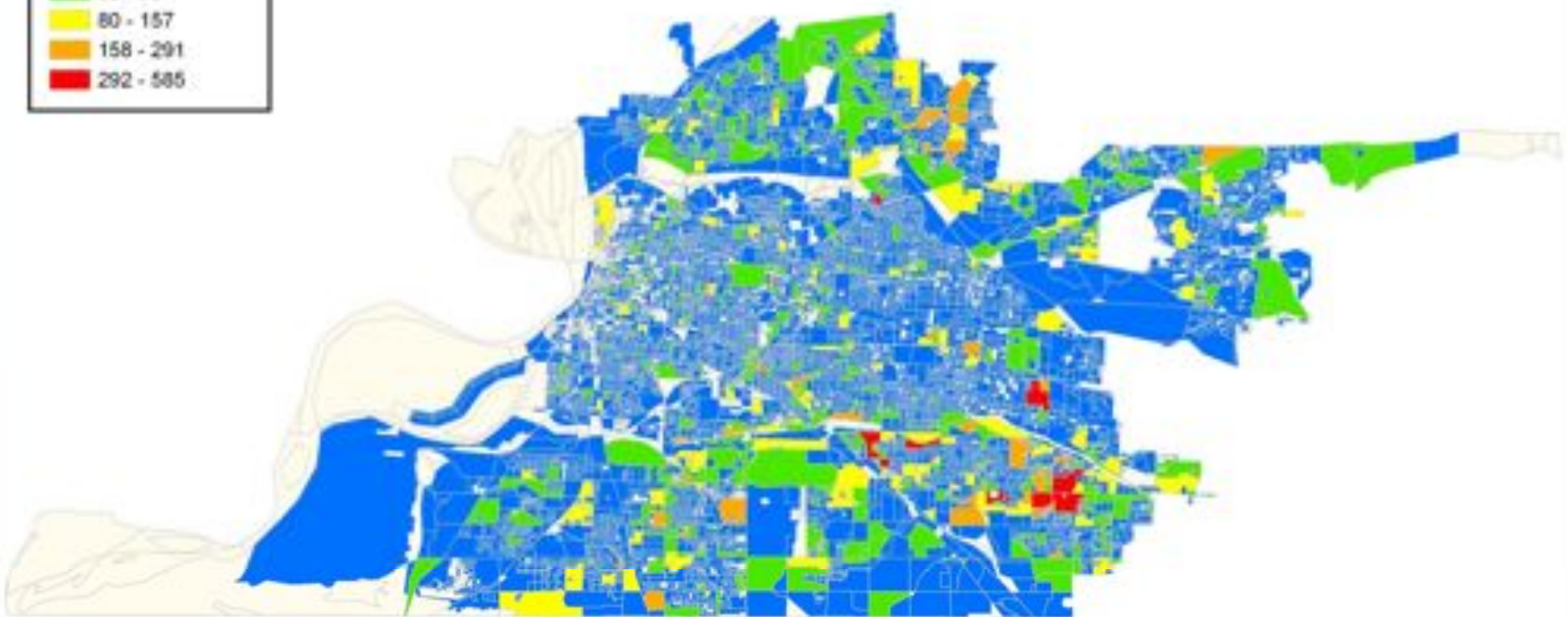
Memphis Offenses by Census Block All Offenses 2007



By: Center for Community
Criminology and Research
Source: MPD Data
January 1, 2007 - December 31, 2007



Legend	
Number of Offenses	
Light Yellow	0
Blue	1 - 34
Green	35 - 79
Yellow	80 - 157
Orange	158 - 291
Red	292 - 585



0 2 4 8 Miles

Memphis Offenses by Census Block

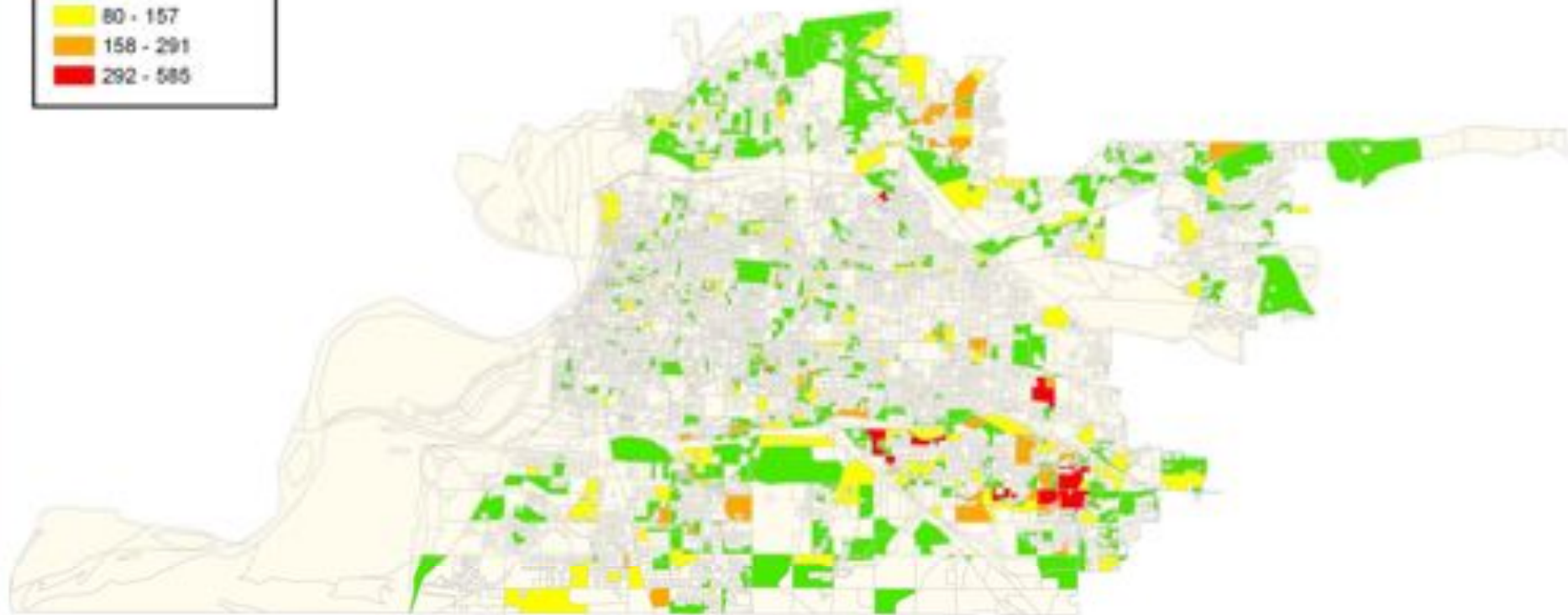
Census Blocks with 35 or More Offenses in 2007



By: Center for Community
Criminology and Research
Source: MPD Data
January 1, 2007 - December 31, 2007



Legend	
Number of Offenses	
0	Lightest yellow
1 - 34	Light yellow
35 - 79	Green
80 - 157	Yellow-orange
158 - 291	Orange
292 - 585	Red





Memphis Offenses by Census Block

Ward 923: Census Blocks with 35 or More Offenses in 2007



By: Center for Community
Criminology and Research
Source: MPD Data
January 1, 2007 - December 31, 2007

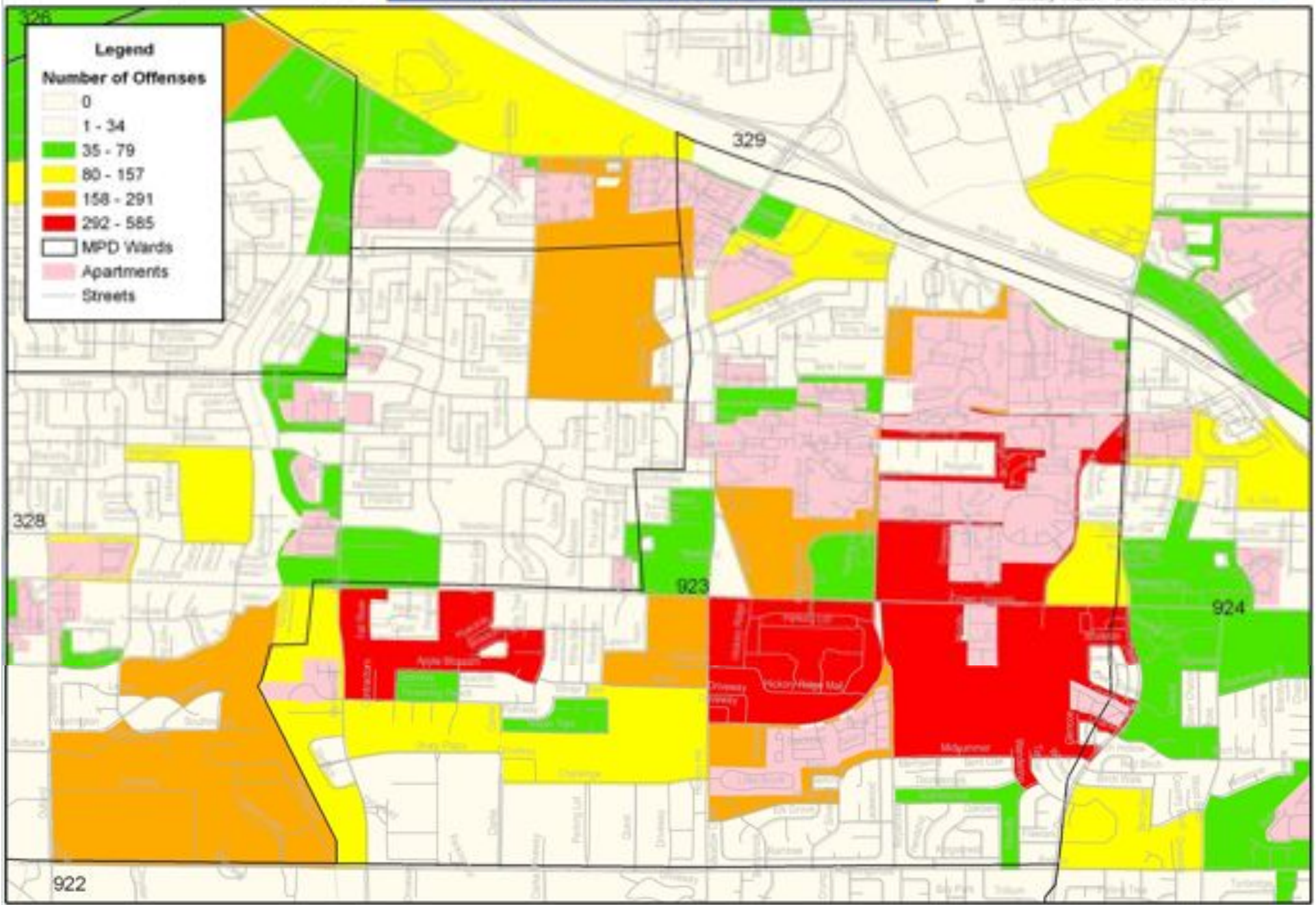


Legend

Number of Offenses


- 0
- 1 - 34
- 35 - 79
- 80 - 157
- 158 - 291
- 292 - 585

MPD Wards
Apartments
Streets



922

Residence Addresses of Arrestees By Census Block- 2007



0 2.5 5 10 Miles

Memphis- High Point Baseline Analysis

2007 Residence Locations by Census Blocks



By: Center for Community
Criminology and Research
Source: MPD Data
January 1, 2007 - December 31, 2007



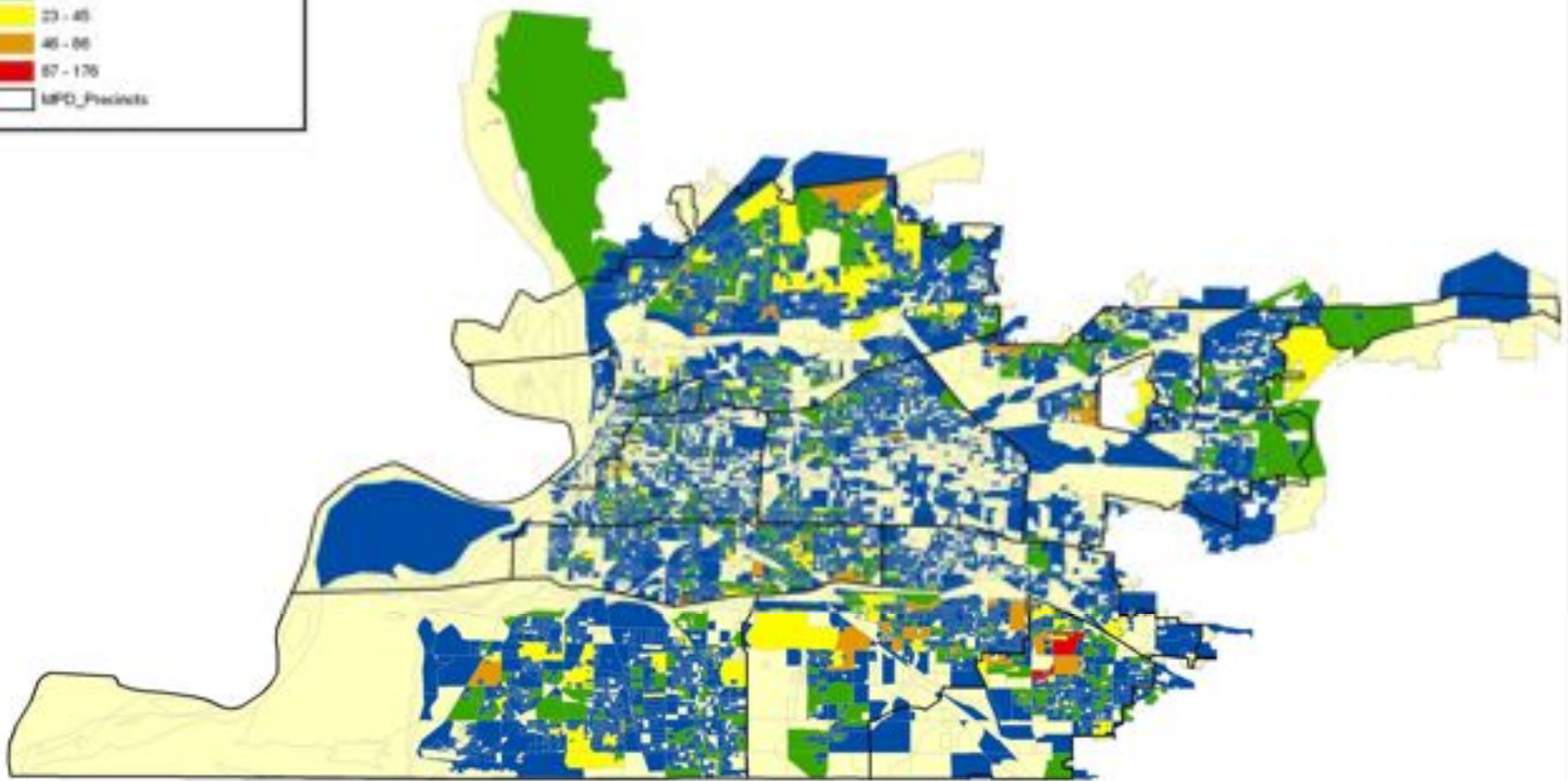
Legend

Residence Locations by Census Blocks

Count

- 0
- 1 - 10
- 11 - 22
- 23 - 45
- 46 - 66
- 67 - 176

MPD_Precincts



0 2.5 5 10 Miles

Memphis - High Point Baseline Analysis

Census Blocks with 11 or More Residence Locations in 2007



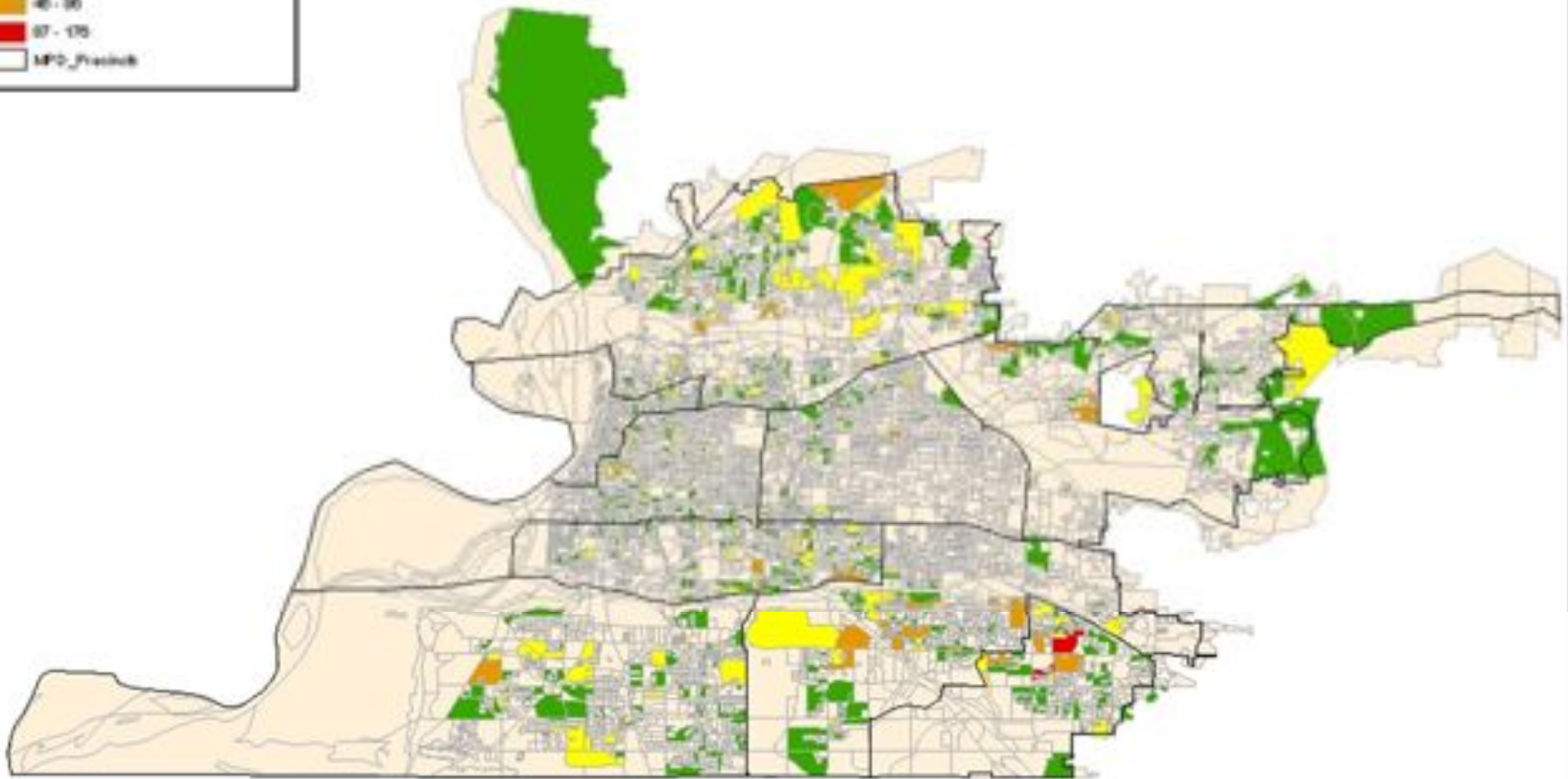
By: Center for Community
Criminology and Research
Source: MPD Data
January 1, 2007 - December 31, 2007



Legend

Residence Locations by Census Blocks
Count

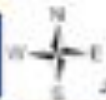
0 - 10
11 - 22
23 - 46
47 - 90
91 - 175
MPD_Precinct



Memphis - High Point Baseline Analysis

Census Blocks with 11 or More Residence Locations in 2007

0 0.25 0.5 1 Miles



By: Center for Community
Criminology and Research
Source: MPD Data
January 1, 2007 - December 31, 2007

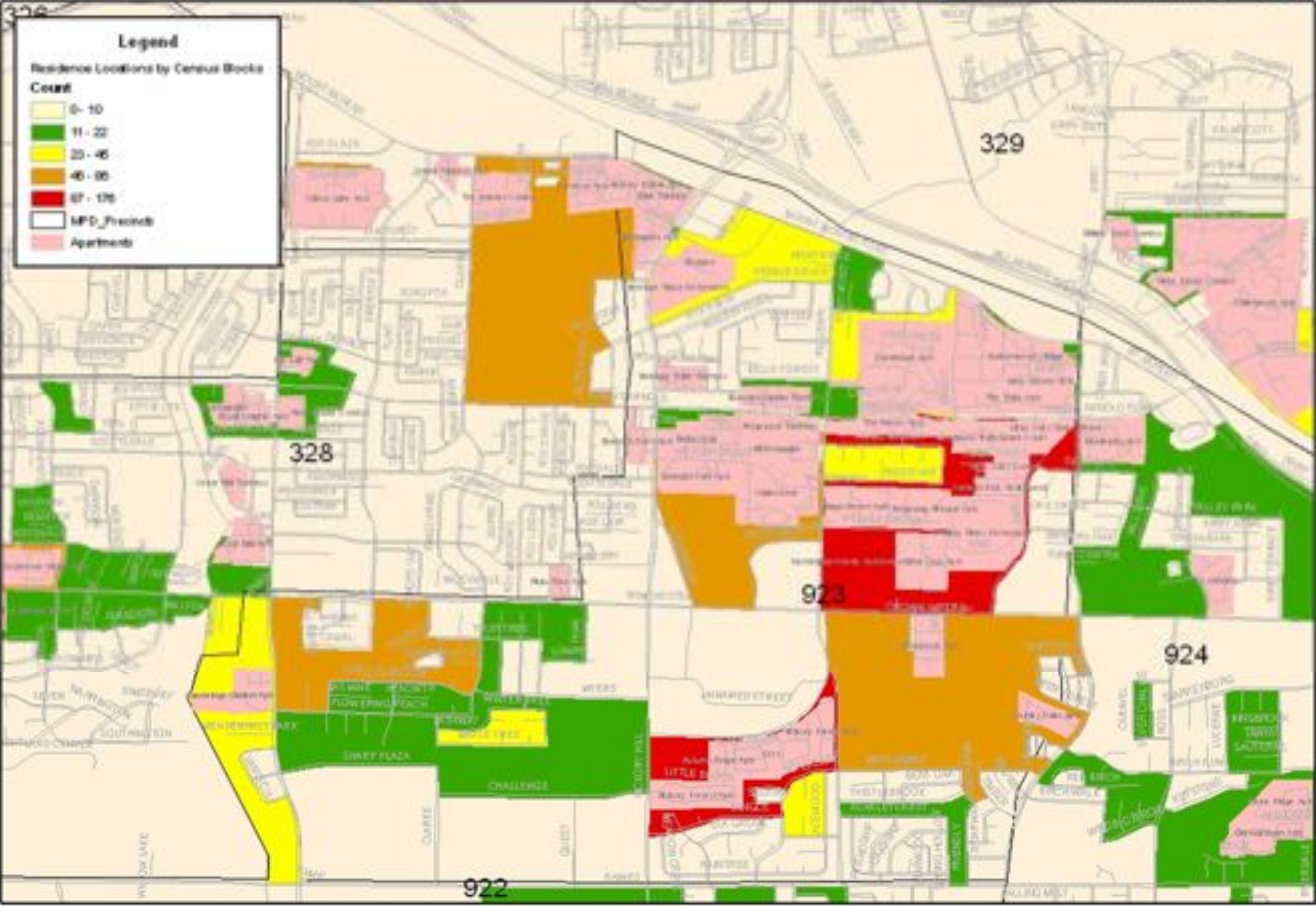


Legend

Residence Locations by Census Blocks
Count

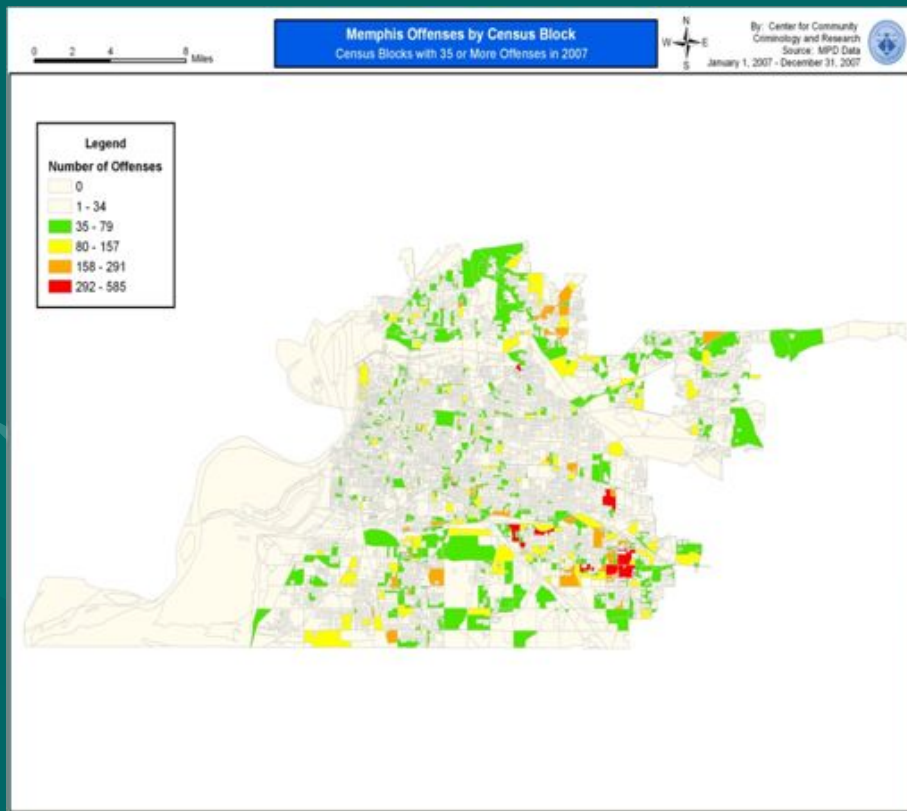
- 0-10
- 11-22
- 23-46
- 46-88
- 87-176

MPD Precincts
Apartments

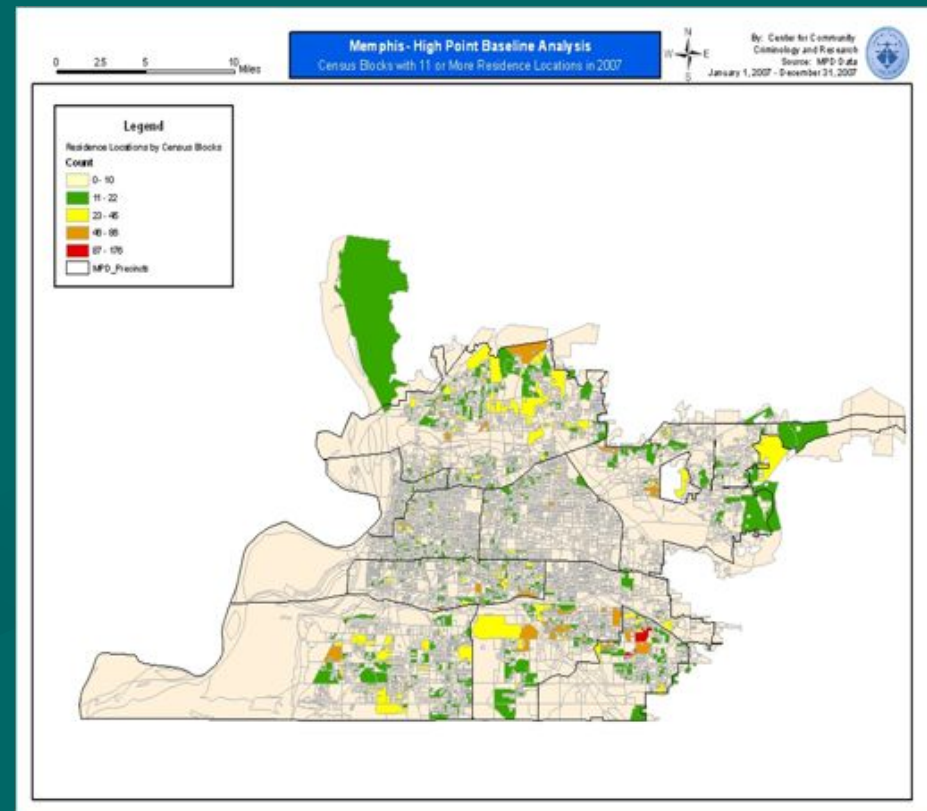


COMPARISON of CENSUS BLOCKS Offenses vs. Residence

Offenses



Residences



Safeways Multi-Dimensional Strategy

Three Legged Stool

- *Long term crime prevention cannot work without effective short-term and sustained law enforcement*
- *Law enforcement alone cannot produce long term crime prevention*
- Safeways three legged stool
 - Law enforcement
 - Community development
 - Human services



Safeways
Law Enforcement
Operations for
Community Safety

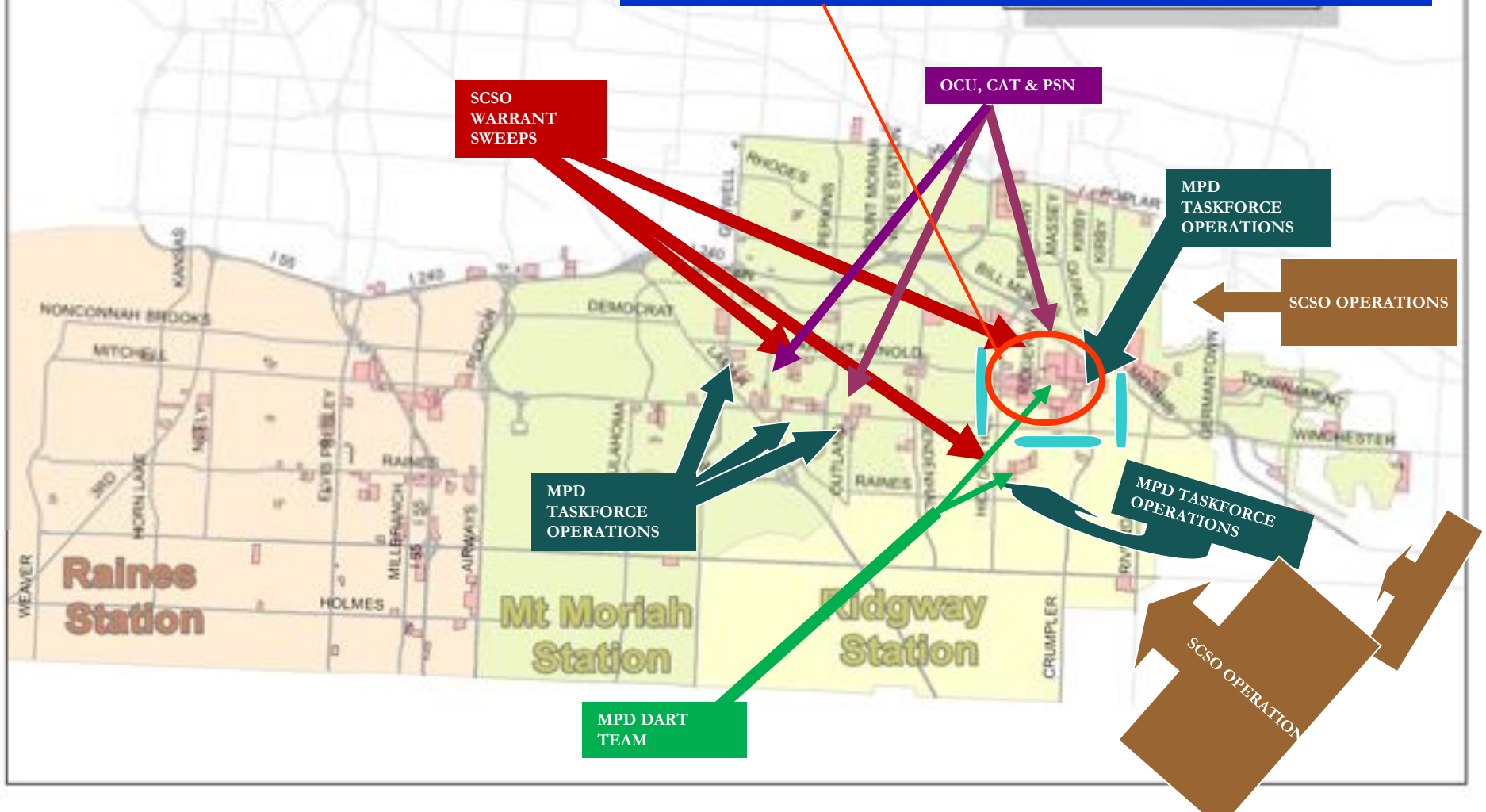
Safeways Law Enforcement Strategy


2006:2009 Crime % Change: -33%

2006:2009 Violent Crime % Change: -28%

Homicides- 8/yr to 2/yr

2006:2009 Property Crime % Change: - 57%





Safeways
Community-Based
Interventions in Support
of Community Safety

Life Course Criminology

STATE DEPENDENCY

ADULTHOOD

- Offending
- Victimization
- Addiction

INFANCY

- Poor CNS Development
- Fussy/Irritable
- Difficult to Soothe
- Poor Parental Bonding

ADOLESCENCE

- Limited Impulse Control
- School Failure
- Deviant Peers
- Aggressive Bias
- Drugs/Alcohol
- Manipulation of others
- Arrest

CHILDHOOD

- Hyperactive
- Impulsive
- Peer rejection
- Language/Reading Problems
- Physical Aggression
- Lying
- Theft

Persistence

Propensity

C
C
U
O
M
N
U
T
L
I
A
N
T
U
I
V
E
Y

Community-Based Intervention

- A collaboration between the Memphis Police Department and the Southeast Memphis CDC
- With technical assistance from SouthEast Memphis Initiative-CBANA and Center for Community Criminology
- Supported by Shelby County and the US Department of Justice

Place Management in Apartment Complexes

- Reduce on-site crime
- Enhance resident quality of life
- Supportive Interventions for Longer Term Crime Prevention

Place Management Tools for Reducing Crime

- Law enforcement/Security
 - CyberWatch/Crime Stoppers
 - Apartment Watch/Drug Dealer Eviction program
 - Authorization of Agency/No Trespass Program
 - Enhanced Security Presence
- Screening and leasing
- CPTED
- Behavior-based Community Rules

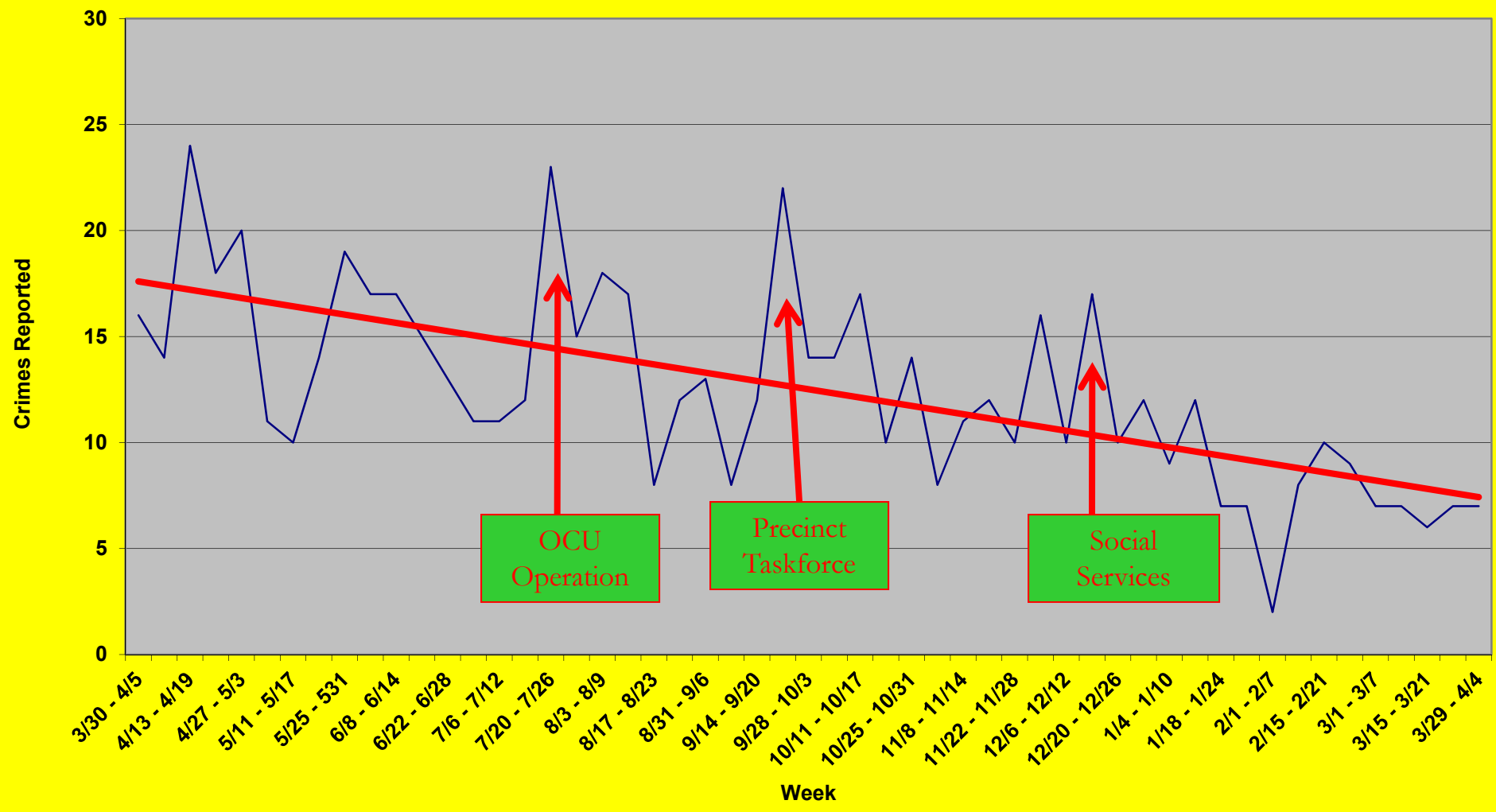
Site-Based Resident Services

Supportive Interventions for Longer Term Crime Prevention

- Early childhood: parenting and Head Start
- Youth: tutoring, mentoring, and employment
- Adults: workforce development and job placement

RESULTS

Kensington Manor Part 1 Crimes April 2009 - April 2010



Public Health Model

