

NIH Policy on Public Access and PubMed Forum

Deborah L. Smith, Ed.D.

Research Affairs

Brenda F. Green, MLS

Associate Professor/Coordinator

UTHSC Library

May 20, 2008

NIH Manuscript Submission Process

Brenda F. Green, MLS
Associate Professor/Coordinator
UTHSC Library

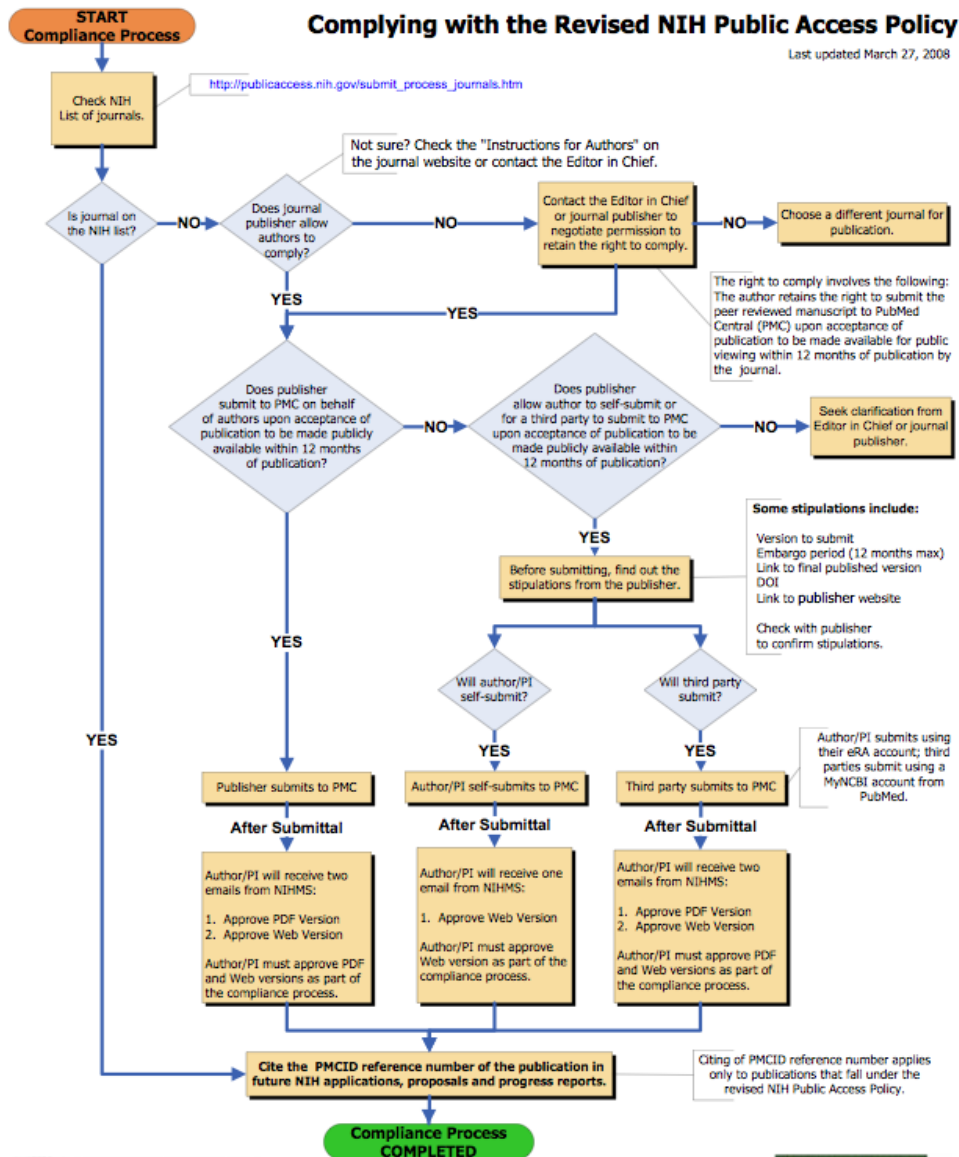
Session Goals

- Review Manuscript Submission Process
- Demonstrate How to Search the Health Sciences Library E-Journal List to Display Full-text Journal Articles
- Demonstrate How to Search PubMed Medline Journals Database to Determine if a Journal is Covered in PubMed

NIH Manuscript Submission System

Prior to submitting manuscripts, you must log in to the system using one of the following described at this link: <http://www.nihms.nih.gov/>

1. eRA Commons
2. NIH Login
3. HHMI Login
4. MyNCBI



[How to Submit an Article](#)

Health Sciences Library Website



THE UNIVERSITY of TENNESSEE
HEALTH SCIENCE CENTER
Memphis, Tennessee

Health Science Center Links ▾
[Exchange](#) / [SiteMap](#) / [Contact Information](#)

Health Sciences Library & Biocommunications Center

877 Madison Ave, Memphis, TN 38163 | 901-448-5634 or 877-747-0004 (Toll-free) | utlibrary@utmem.edu

Navigation - Popular Resources - [Questions?](#) 

First Time User?
Register Now

- Home
- Borrowing and Requests
- Calendar
- Catalog
- Computing
- E-Resources
- FAQs
- General Information
- Historical Collections
- Instruction
- Library Orientation

Resources
[Catalog](#)
[Books](#)
[Journals](#)
[E-Journals](#)
[more ...](#)

Services
[Ask a Librarian](#)
[Course Reserves](#)
[Interlibrary Loan](#)
[Workshops](#)
[more ...](#)

General Info
[Hours](#)
[Directions](#)
[Faculty & Staff](#)
[Open Positions](#)
[more ...](#)

Health Care News  **Library News & Tips** 

The views expressed in the following news items do not necessarily reflect those of the employees of the University of Tennessee Health Science Center.

Your Opinion Needed!

Library Cancellation Survey
[Take it now.](#)

Library Hours:
Mon-Thu: 8:00 am - 12:00 am
Fri: 8:00 am - 11:00 pm

Accessing A-Z eJournals



THE UNIVERSITY of TENNESSEE
HEALTH SCIENCE CENTER
Memphis, Tennessee

Health Science Center Links ▾

[Exchange](#) / [SiteMap](#) / [Contact Information](#)

Health Sciences Library & Biocommunications Center

877 Madison Ave, Memphis, TN 38163 | 901-448-5634 or 877-747-0004 (Toll-free) | utlibrary@utmem.edu

Navigation [Questions?](#) 

 **First Time User?**
Register Now

- Home
- Borrowing and Requests
- Calendar
- Catalog
- Computing
- E-Resources
- FAQs

Resources

- [Catalog](#)
- [Books](#)
- [Journals](#)
- [E-Journals](#)
- [more ...](#)

Services

- [Ask a Librarian](#)
- [Course Reserves](#)
- [Interlibrary Loan](#)
- [Workshops](#)
- [more ...](#)

General Info

- [Hours](#)
- [Directions](#)
- [Faculty & Staff](#)
- [Open Positions](#)
- [more ...](#)

Your Opinion Needed!



Library Cancellation Survey
Take it now.

 [Health Care News](#)  [Library News & Tips](#)

Accessing PubMed from the Library's Homepage



THE UNIVERSITY of TENNESSEE
HEALTH SCIENCE CENTER
Memphis, Tennessee

Health Science Center Links ▾

[Exchange](#) / [SiteMap](#) / [Contact Information](#)

Health Sciences Library & Biocommunications Center

877 Madison Ave, Memphis, TN 38163 | 901-448-5634 or 877-747-0004 (Toll-free) | utlibrary@utmem.edu

[Questions?](#) 

Navigation

-  **First Time User?**
Register Now
- Home
- Borrowing and Requests
- Calendar
- Catalog
- Computing
- E-Resources
- FAQs

Popular Resources

- CINAHL@EBSCOhost
- Interlibrary Loan Request
- Login from Off Campus
- MDConsult
- Micromedex
- Ovid
- PubMed**
- Scopus
- UpToDate
- View Your Library Record

General Info

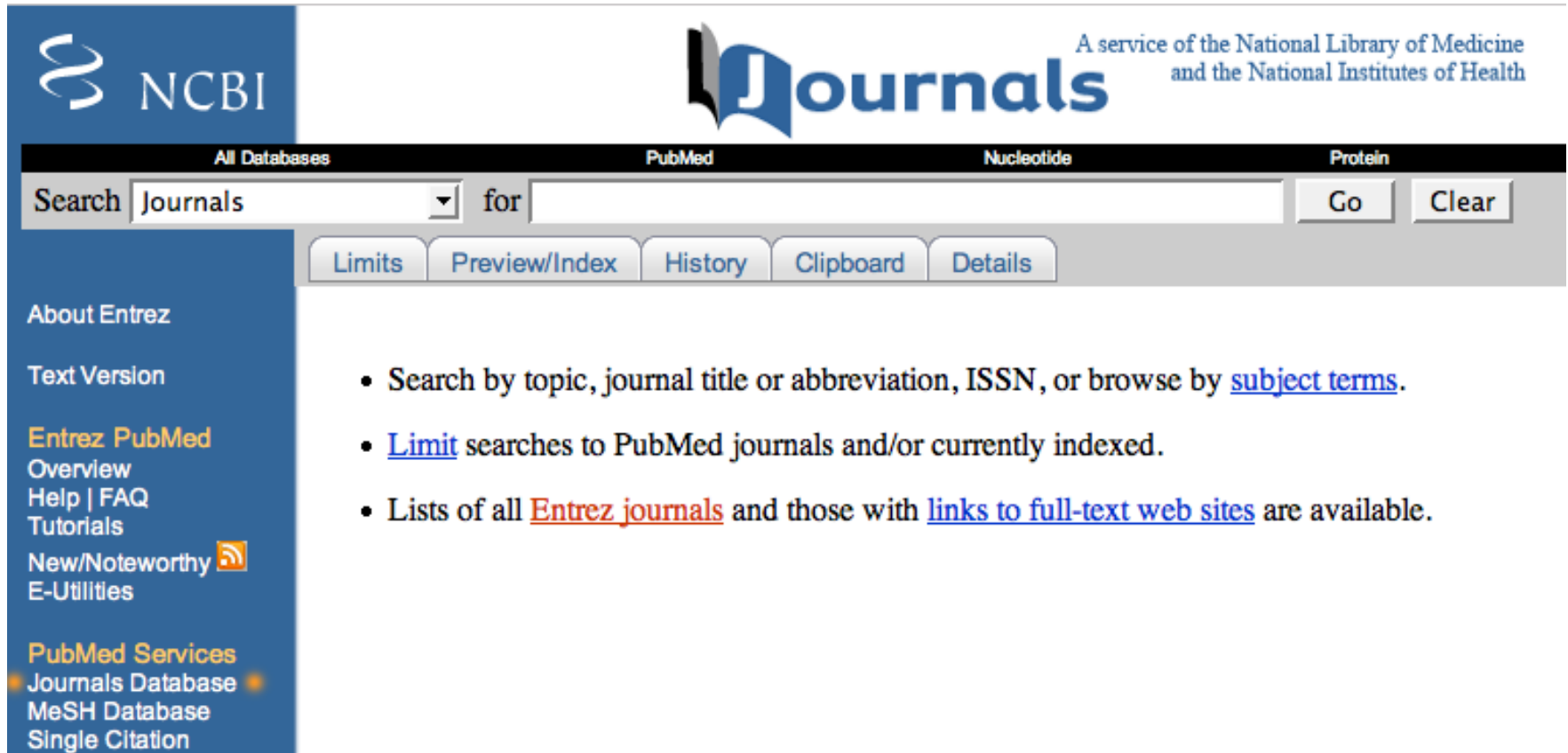
- [Hours](#)
- [Directions](#)
- [Faculty & Staff](#)
- [Open Positions](#)
- [more ...](#)

Your Opinion Needed!


Library Cancellation Survey
[Take it now.](#)

 [Health Care News](#)  [Library News & Tips](#)

PubMed Journal Database



The screenshot shows the PubMed Journals database interface. At the top left is the NCBI logo. To the right is the 'Journals' logo with the text 'A service of the National Library of Medicine and the National Institutes of Health'. Below this is a search bar with a dropdown menu set to 'Journals' and a search input field. To the right of the search bar are 'Go' and 'Clear' buttons. Below the search bar are buttons for 'Limits', 'Preview/Index', 'History', 'Clipboard', and 'Details'. On the left side, there is a navigation menu with links to 'About Entrez', 'Text Version', 'Entrez PubMed Overview', 'Help | FAQ', 'Tutorials', 'New/Noteworthy', 'E-Utilities', 'PubMed Services', 'Journals Database', 'MeSH Database', and 'Single Citation'. The main content area contains a list of search options.

Search Journals for Go Clear

Limits Preview/Index History Clipboard Details

- Search by topic, journal title or abbreviation, ISSN, or browse by [subject terms](#).
- [Limit](#) searches to PubMed journals and/or currently indexed.
- Lists of all [Entrez journals](#) and those with [links to full-text web sites](#) are available.

Questions?

NIHMS System Slide Show:

<http://www.nihms.nih.gov/web-help/index.html>

Public Access Frequently Asked Questions

<http://www.nihms.nih.gov/faq.html>

NIH Public Access Policy

Deborah L. Smith, Ed.D.

May 20, 2008

NIH Policy Link

- Current info is posted on the NIH web site:
 - <http://publicaccess.nih.gov/>

UTHSC Links

- Link on UTHSC Research Administration Home Page:
 - http://www.utmem.edu/research/research_admin/
- Link to UTHSC Library Web page:
 - <http://library.utmem.edu/reference/oai>

Legal Requirement

- NIH Public Access Policy implements Division G, Title II, Section 218 of PL 110-161 (Consolidated Appropriations Act, 2008) :
 - *The Director of the National Institutes of Health shall require that all investigators funded by the NIH submit or have submitted for them to the National Library of Medicine's PubMed Central an electronic version of their final, peer-reviewed manuscripts upon acceptance for publication, to be made publicly available **no later than 12 months after the official date of publication**: Provided, That the NIH shall implement the public access policy in a manner consistent with copyright law.*

Journals May Submit Articles

- The NIH has a link to a list of journals that submit articles to PubMed:
 - http://publicaccess.nih.gov/submit_process_journals.htm

What is PubMed Central?

- PubMed Central (PMC) is the NIH digital archive of full-text, peer-reviewed journal articles. Its content is publicly accessible and integrated with other databases.
<http://www.pubmedcentral.nih.gov>

Specifics

- The NIH Public Access Policy applies to all peer-reviewed articles [papers] that arise, **in whole or in part**, from **direct costs** funded by NIH, or from NIH staff, that are **accepted for publication on or after April 7, 2008**.
- **Institutions and investigators are responsible** for ensuring that any publishing or copyright agreements concerning submitted articles fully comply with this Policy.
- **NIH Notice: NOT-OD-08-033**

Investigator Responsibility

- Do not sign copyright waiver unless the publisher agrees to PubMed submission.
- If publisher submits to PubMed, check the submission to be sure it is accurate and includes full text, graphs, etc. and allows for release within 12 months.
- Approve final manuscript for submission to PubMed.

Institution Responsibility

- Informing Investigators of policy; providing training as necessary to facilitate the PubMed submission process
- Checking progress reports to ensure that citations are appropriate

Specifics (cont'd)

- The final, peer-reviewed manuscript **includes all graphics and supplemental materials** that are associated with the article.
- **NIH Notice: NOT-OD-08-033**

Grant Submissions

- Beginning **May 25, 2008**, anyone submitting an application, proposal or progress report to the NIH must **include the PMC or NIH Manuscript Submission reference number when citing applicable articles that arise from their NIH funded research**. This policy includes applications submitted to the NIH for the May 25, 2008 due date and subsequent due dates.
- NOTE: On e-SNAPs, be sure Manuscript Submission System is available
- NIH Notice: **NOT-OD-08-033**

Version 2.16.2.2

Welcome dsmith

Institution: UNIVERSITY OF TENNESSEE HEALTH SCI CTR

Authority: SO [Log-out](#)

[Home](#)

[Admin](#)

[Institution Profile](#)

[Personal Profile](#)

[Sta](#)

[eSNAP](#)

[xTrain](#)

[Links](#)

[eRA Partners](#)

[Help](#)

[Grant List](#)

[eSNAP](#)

[Upload Science](#)

[Edit Business](#)

[PD/PI Assurance Report](#)

eSNAP **Menu**

NIH Manuscript Submission System Status: Available

[Application Information](#)

Grant Number:

Institution:

UNIVERSITY OF TENNESSEE HEALTH SCI CTR

PI Name:

Project Title:

Due Date:

05/16/2008

Current Reviewer:

Smith, Deborah L

Status:

Reviewer Work in Progress

Status of Completion:

Upload Science Complete

Organization Information Complete

Performance Sites Complete

Easy Submission to PubMed

- Submitting a manuscript usually takes less than 10 minutes.

FAQs on the Policy

- <http://publicaccess.nih.gov/FAQ.htm>

Contacts

Library Reference Desk – 448-5404

ORA – 448-5587